

LuxEOS Flood 18 VIVID COLOUR

LED FLOOD FOR ARCHITECTURAL LIGHTING



LuxEOS Flood 18 - RGBW (2700K)
10° 20° 40° 80° 10x60° 60x10°

Tested By
DW Windsor Group Laboratory
Hoddesdon
UK

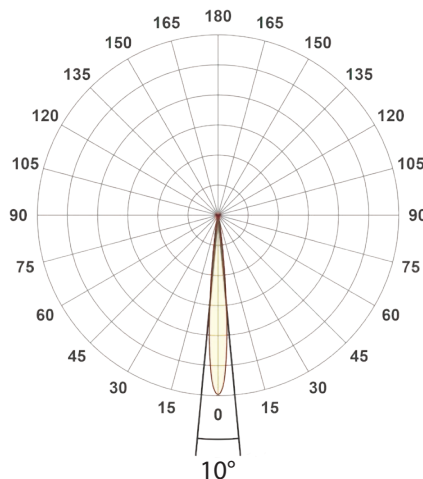
Date
Nov 2020

Dimensions
350mm (H) x 420mm (W) x 150mm (D) (including yoke)

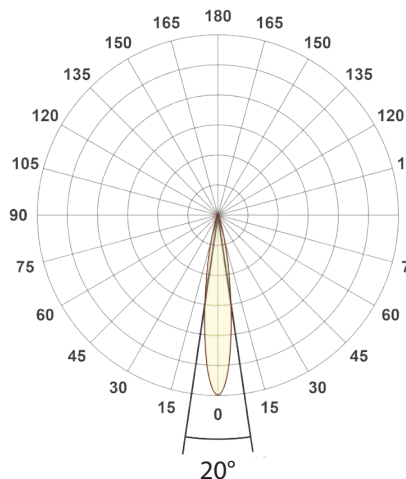
Weight
12 kgs (26.46lbs)

Polar Distribution

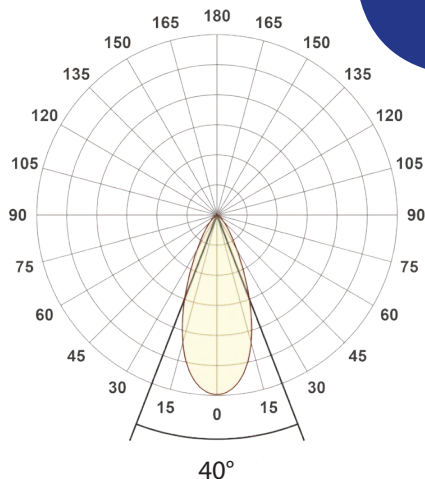
10° Conical Beam (Native)



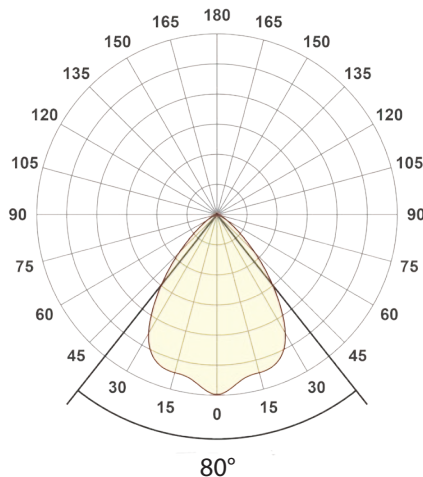
20° Conical Beam (With HBS)



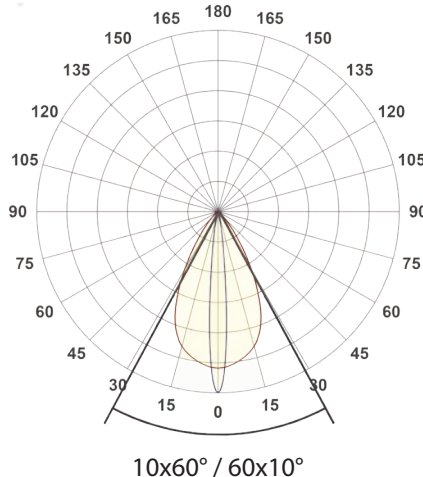
40° Conical Beam (With HBS)



80° Conical Beam (With HBS)

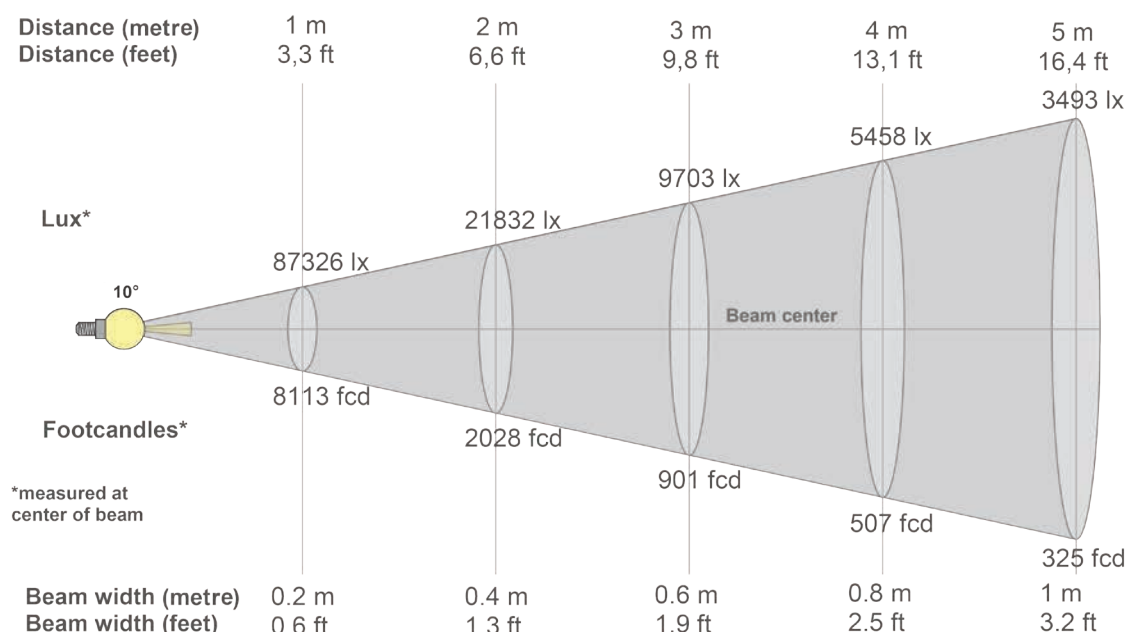


10x60° / 60x10° Elliptical Beam (With HBS)



LuxEOS Flood 18 - RGBW (2700K)

Intensities at Distance with native 10° Optics



Beam intensities from 1-20m

1m	2m	3m	4m	5m	6m	7m	8m	9m	10m	11m	12m	13m	14m	15m	16m	17m	18m	19m	20m
3.3ft	6.6ft	9.8ft	13.1ft	16.4ft	19.7ft	23ft	26.2ft	29.5ft	32.8ft	36.1ft	39.4ft	42.7ft	45.9ft	49.2ft	52.5ft	55.8ft	59.1ft	62.3ft	65.6ft
87326lx	21832lx	9703lx	5458lx	3493lx	2426lx	1782lx	1364lx	1078lx	873lx	722lx	606lx	517lx	446lx	388lx	341lx	302lx	270lx	242lx	218lx
8112.9fc	2028.2fc	901.4fc	507.1fc	324.5fc	225.4fc	165.6fc	126.8fc	100.2fc	81.1fc	67fc	56.3fc	48fc	41.4fc	36.1fc	31.7fc	28.1fc	25fc	22.5fc	20.3fc

Intensities in 0° c-plane

0°	1°	2°	3°	4°	5°	6°	7°	8°	9°	10°	11°	12°	13°	14°	15°	16°	17°	18°	19°
87.3K	86.0K	82.0K	75.0K	64.3K	50.8K	37.0K	25.0K	16.0K	9.9K	6.2K	4.3K	3.3K	2.8K	2.4K	2.1K	1.7K	1.4K	1.1K	0.9K
100%	98%	94%	86%	74%	58%	42%	29%	18%	11%	7%	5%	4%	3%	3%	2%	2%	2%	1%	1%

Intensities in 90° c-plane

0°	1°	2°	3°	4°	5°	6°	7°	8°	9°	10°	11°	12°	13°	14°	15°	16°	17°	18°	19°
87.3K	86.0K	82.0K	75.0K	64.3K	50.8K	37.0K	25.0K	16.0K	9.9K	6.2K	4.3K	3.3K	2.8K	2.4K	2.1K	1.7K	1.4K	1.1K	0.9K
100%	98%	94%	86%	74%	58%	42%	29%	18%	11%	7%	5%	4%	3%	3%	2%	2%	2%	1%	1%

Intensities in 180° c-plane

0°	1°	2°	3°	4°	5°	6°	7°	8°	9°	10°	11°	12°	13°	14°	15°	16°	17°	18°	19°
87.3K	86.0K	82.0K	75.0K	64.3K	50.8K	37.0K	25.0K	16.0K	9.9K	6.2K	4.3K	3.3K	2.8K	2.4K	2.1K	1.7K	1.4K	1.1K	0.9K
100%	98%	94%	86%	74%	58%	42%	29%	18%	11%	7%	5%	4%	3%	3%	2%	2%	2%	1%	1%

Intensities in 270° c-plane

0°	1°	2°	3°	4°	5°	6°	7°	8°	9°	10°	11°	12°	13°	14°	15°	16°	17°	18°	19°
87.3K	86.0K	82.0K	75.0K	64.3K	50.8K	37.0K	25.0K	16.0K	9.9K	6.2K	4.3K	3.3K	2.8K	2.4K	2.1K	1.7K	1.4K	1.1K	0.9K
100%	98%	94%	86%	74%	58%	42%	29%	18%	11%	7%	5%	4%	3%	3%	2%	2%	2%	1%	1%

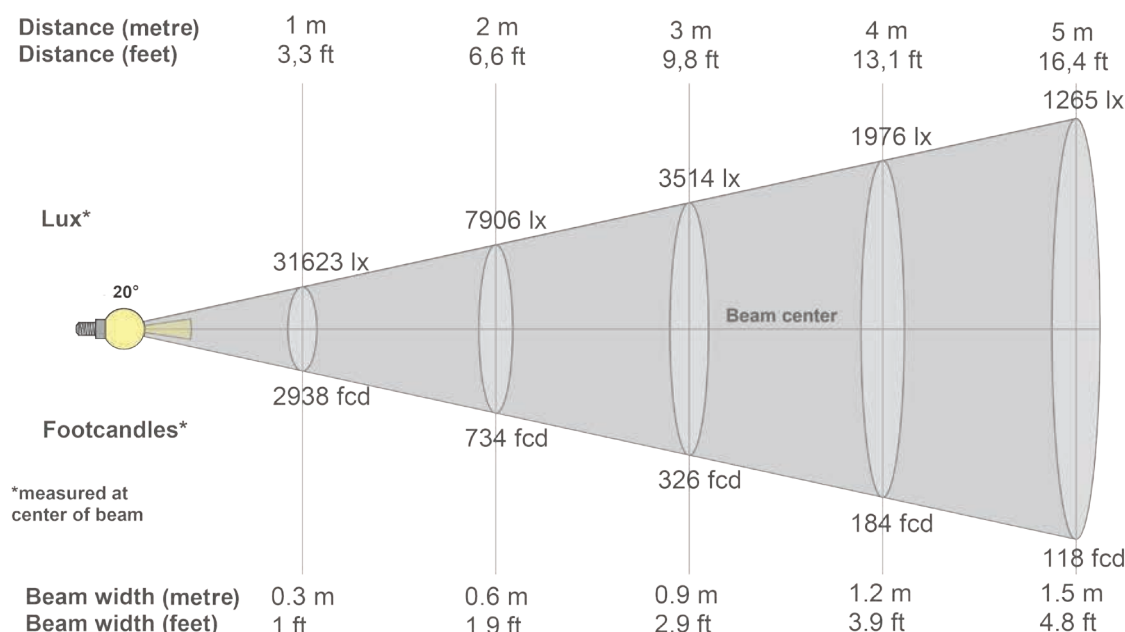
Beam angle 50%	Field angle 10%	Cutoff angle 2,5%	Intensity ratio in 120° cone	Intensity ratio in 90° cone
11°	18.5°	29.3°	97.8%	96.4%

DW Windsor

Pindar Road, Hoddesdon, EN11 0DX
www.dwwindsor.com | info@dwwindsor.com | +44 (0) 1992 474 600

LuxEOS Flood 18 - RGBW (2700K)

Intensities at Distance with 20° Optics



Beam intensities from 1-20m

1m	2m	3m	4m	5m	6m	7m	8m	9m	10m	11m	12m	13m	14m	15m	16m	17m	18m	19m	20m
3.3ft	6.6ft	9.8ft	13.1ft	16.4ft	19.7ft	23ft	26.2ft	29.5ft	32.8ft	36.1ft	39.4ft	42.7ft	45.9ft	49.2ft	52.5ft	55.8ft	59.1ft	62.3ft	65.6ft
31623lx	7906lx	3514lx	1976lx	1265lx	878lx	645lx	494lx	390lx	316lx	261lx	220lx	187lx	161lx	141lx	124lx	109lx	98lx	88lx	79lx
2937.9fcd	734.5fcd	326.4fcd	183.6fcd	117.5fcd	81.6fcd	60fcd	45.9fcd	36.3fcd	29.4fcd	24.3fcd	20.4fcd	17.4fcd	15fcd	13.1fcd	11.5fcd	10.2fcd	9.1fcd	8.1fcd	7.3fcd

Intensities in 0° c-plane

0°	1°	2°	3°	4°	5°	6°	7°	8°	9°	10°	11°	12°	13°	14°	15°	16°	17°	18°	19°
31.6K	31.4K	30.4K	28.9K	26.9K	24.6K	22.0K	19.4K	16.8K	14.3K	12.0K	10.0K	8.2K	6.7K	5.4K	4.4K	3.5K	2.9K	2.3K	1.9K
100%	99%	96%	91%	85%	78%	70%	61%	53%	45%	38%	32%	26%	21%	17%	14%	11%	9%	7%	6%

Intensities in 90° c-plane

0°	1°	2°	3°	4°	5°	6°	7°	8°	9°	10°	11°	12°	13°	14°	15°	16°	17°	18°	19°
31.6K	31.4K	30.4K	28.9K	26.9K	24.6K	22.0K	19.4K	16.8K	14.3K	12.0K	10.0K	8.2K	6.7K	5.4K	4.4K	3.5K	2.9K	2.3K	1.9K
100%	99%	96%	91%	85%	78%	70%	61%	53%	45%	38%	32%	26%	21%	17%	14%	11%	9%	7%	6%

Intensities in 180° c-plane

0°	1°	2°	3°	4°	5°	6°	7°	8°	9°	10°	11°	12°	13°	14°	15°	16°	17°	18°	19°
31.6K	31.4K	30.4K	28.9K	26.9K	24.6K	22.0K	19.4K	16.8K	14.3K	12.0K	10.0K	8.2K	6.7K	5.4K	4.4K	3.5K	2.9K	2.3K	1.9K
100%	99%	96%	91%	85%	78%	70%	61%	53%	45%	38%	32%	26%	21%	17%	14%	11%	9%	7%	6%

Intensities in 270° c-plane

0°	1°	2°	3°	4°	5°	6°	7°	8°	9°	10°	11°	12°	13°	14°	15°	16°	17°	18°	19°
31.6K	31.4K	30.4K	28.9K	26.9K	24.6K	22.0K	19.4K	16.8K	14.3K	12.0K	10.0K	8.2K	6.7K	5.4K	4.4K	3.5K	2.9K	2.3K	1.9K
100%	99%	96%	91%	85%	78%	70%	61%	53%	45%	38%	32%	26%	21%	17%	14%	11%	9%	7%	6%

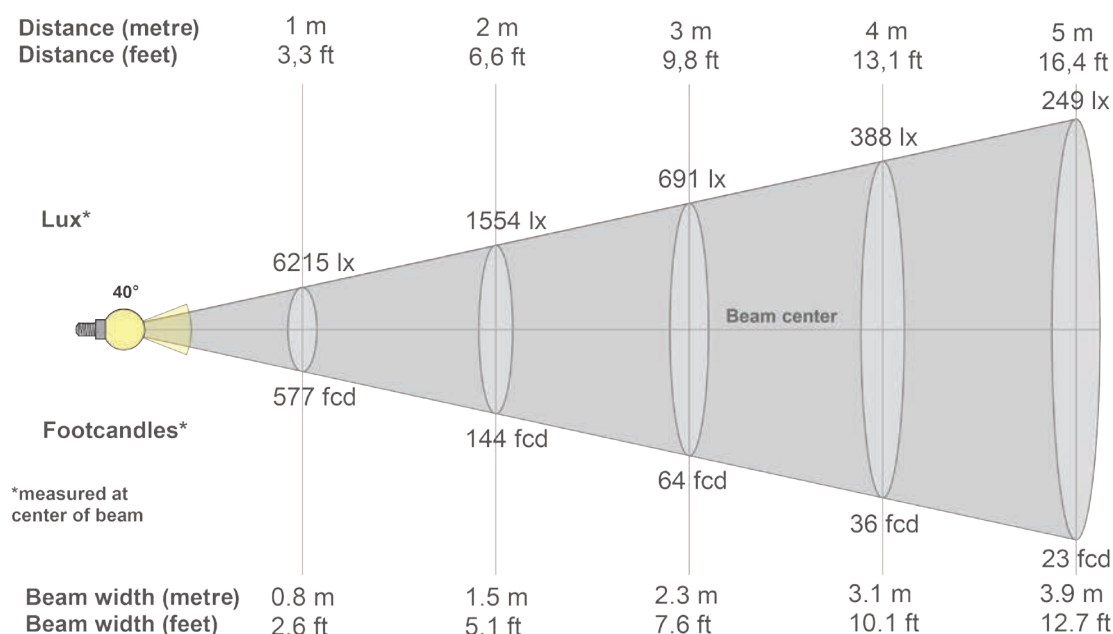
Beam angle 50%	Field angle 10%	Cutoff angle 2,5%	Intensity ratio in 120° cone	Intensity ratio in 90° cone
16.8°	33.1°	47.6°	97.0%	94.9%

DW Windsor

Pindar Road, Hoddesdon, EN11 0DX
www.dwwindsor.com | info@dwwindsor.com | +44 (0) 1992 474 600

LuxEOS Flood 18 - RGBW (2700K)

Intensities at Distance with 40° Optics



Beam intensities from 1-20m

1m	2m	3m	4m	5m	6m	7m	8m	9m	10m	11m	12m	13m	14m	15m	16m	17m	18m	19m	20m
3.3ft	6.6ft	9.8ft	13.1ft	16.4ft	19.7ft	23ft	26.2ft	29.5ft	32.8ft	36.1ft	39.4ft	42.7ft	45.9ft	49.2ft	52.5ft	55.8ft	59.1ft	62.3ft	65.6ft
6215lx	1554lx	691lx	388lx	249lx	173lx	127lx	97lx	77lx	62lx	51lx	43lx	37lx	32lx	28lx	24lx	22lx	19lx	17lx	16lx
577.4fc	144.3fc	64.2fc	36.1fc	23.1fc	16fc	11.8fc	9fc	7.1fc	5.8fc	4.8fc	4fc	3.4fc	2.9fc	2.6fc	2.3fc	2fc	1.8fc	1.6fc	1.4fc

Intensities in 0° c-plane

0°	2°	4°	6°	8°	10°	12°	14°	16°	18°	20°	22°	24°	26°	28°	30°	32°	34°	36°	38°
6215	6190	6105	5964	5762	5498	5173	4787	4352	3880	3388	2901	2442	2029	1673	1377	1135	937	774	640
100%	100%	98%	96%	93%	88%	83%	77%	70%	62%	55%	47%	39%	33%	27%	22%	18%	15%	12%	10%

Intensities in 90° c-plane

0°	2°	4°	6°	8°	10°	12°	14°	16°	18°	20°	22°	24°	26°	28°	30°	32°	34°	36°	38°
6215	6190	6105	5964	5762	5498	5173	4787	4352	3880	3388	2901	2442	2029	1673	1377	1135	937	774	640
100%	100%	98%	96%	93%	88%	83%	77%	70%	62%	55%	47%	39%	33%	27%	22%	18%	15%	12%	10%

Intensities in 180° c-plane

0°	2°	4°	6°	8°	10°	12°	14°	16°	18°	20°	22°	24°	26°	28°	30°	32°	34°	36°	38°
6215	6190	6105	5964	5762	5498	5173	4787	4352	3880	3388	2901	2442	2029	1673	1377	1135	937	774	640
100%	100%	98%	96%	93%	88%	83%	77%	70%	62%	55%	47%	39%	33%	27%	22%	18%	15%	12%	10%

Intensities in 270° c-plane

0°	2°	4°	6°	8°	10°	12°	14°	16°	18°	20°	22°	24°	26°	28°	30°	32°	34°	36°	38°
6215	6190	6105	5964	5762	5498	5173	4787	4352	3880	3388	2901	2442	2029	1673	1377	1135	937	774	640
100%	100%	98%	96%	93%	88%	83%	77%	70%	62%	55%	47%	39%	33%	27%	22%	18%	15%	12%	10%

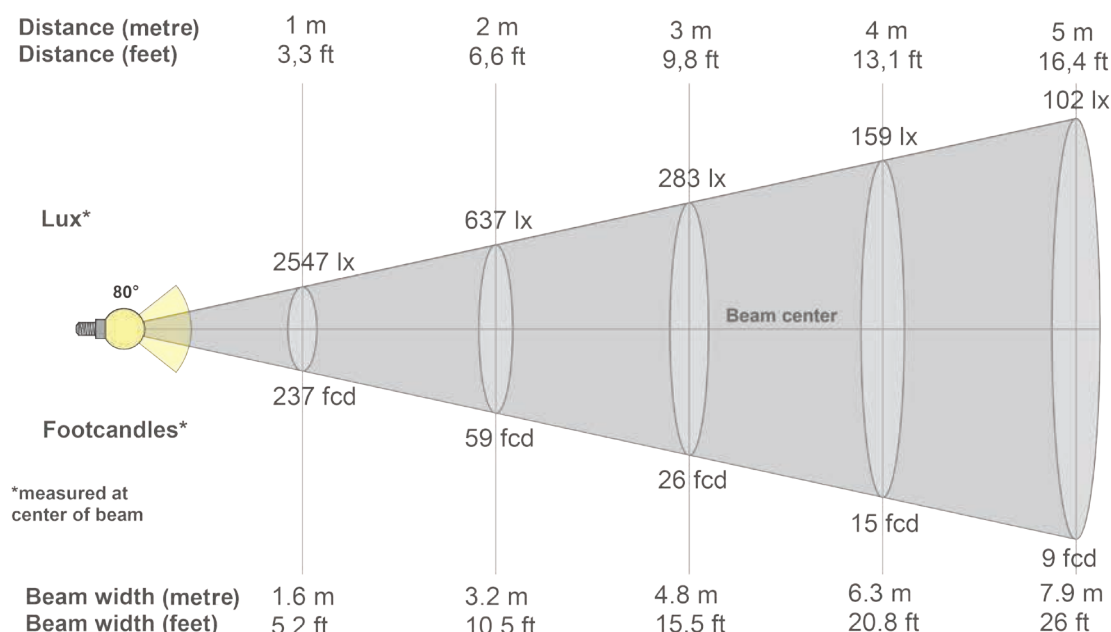
Beam angle 50%	Field angle 10%	Cutoff angle 2,5%	Intensity ratio in 120° cone	Intensity ratio in 90° cone
42.3°	76.6°	105.5°	96.7%	90.9%

DW Windsor

Pindar Road, Hoddesdon, EN11 0DX
www.dwwindsor.com | info@dwwindsor.com | +44 (0) 1992 474 600

LuxEOS Flood 18 - RGBW (2700K)

Intensities at Distance with 80° Optics



Beam intensities from 1-20m

1m	2m	3m	4m	5m	6m	7m	8m	9m	10m	11m	12m	13m	14m	15m	16m	17m	18m	19m	20m
3.3ft	6.6ft	9.8ft	13.1ft	16.4ft	19.7ft	23ft	26.2ft	29.5ft	32.8ft	36.1ft	39.4ft	42.7ft	45.9ft	49.2ft	52.5ft	55.8ft	59.1ft	62.3ft	65.6ft
2547lx	637lx	283lx	159lx	102lx	71lx	52lx	40lx	31lx	25lx	21lx	18lx	15lx	13lx	11lx	10lx	9lx	8lx	7lx	6lx
236.6fcd	59.2fcd	26.3fcd	14.8fcd	9.5fcd	6.6fcd	4.8fcd	3.7fcd	2.9fcd	2.4fcd	2fcd	1.6fcd	1.4fcd	1.2fcd	1.1fcd	0.9fcd	0.8fcd	0.7fcd	0.7fcd	0.6fcd

Intensities in 0° c-plane

0°	5°	10°	15°	20°	25°	30°	35°	40°	45°	50°	55°	60°	65°	70°	75°	80°	85°	90°	95°
2547	2463	2347	2322	2297	2188	1942	1559	1142	763	460	266	159	101	65	39	20	6	1	0
100%	97%	92%	91%	90%	86%	76%	61%	45%	30%	18%	10%	6%	4%	3%	2%	1%	0%	0%	0%

Intensities in 90° c-plane

0°	5°	10°	15°	20°	25°	30°	35°	40°	45°	50°	55°	60°	65°	70°	75°	80°	85°	90°	95°
2547	2463	2347	2322	2297	2188	1942	1559	1142	763	460	266	159	101	65	39	20	6	1	0
100%	97%	92%	91%	90%	86%	76%	61%	45%	30%	18%	10%	6%	4%	3%	2%	1%	0%	0%	0%

Intensities in 180° c-plane

0°	5°	10°	15°	20°	25°	30°	35°	40°	45°	50°	55°	60°	65°	70°	75°	80°	85°	90°	95°
2547	2463	2347	2322	2297	2188	1942	1559	1142	763	460	266	159	101	65	39	20	6	1	0
100%	97%	92%	91%	90%	86%	76%	61%	45%	30%	18%	10%	6%	4%	3%	2%	1%	0%	0%	0%

Intensities in 270° c-plane

0°	5°	10°	15°	20°	25°	30°	35°	40°	45°	50°	55°	60°	65°	70°	75°	80°	85°	90°	95°
2547	2463	2347	2322	2297	2188	1942	1559	1142	763	460	266	159	101	65	39	20	6	1	0
100%	97%	92%	91%	90%	86%	76%	61%	45%	30%	18%	10%	6%	4%	3%	2%	1%	0%	0%	0%

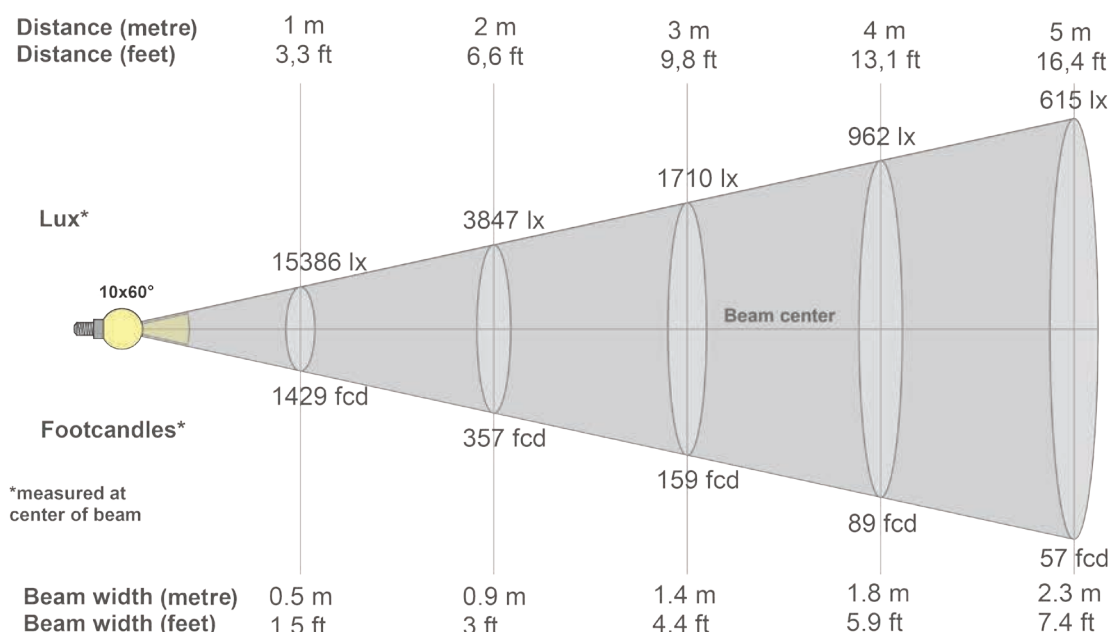
Beam angle 50%	Field angle 10%	Cutoff angle 2,5%	Intensity ratio in 120° cone	Intensity ratio in 90° cone
76.8°	110.8°	140.5°	95.0%	82.4%

DW Windsor

Pindar Road, Hoddesdon, EN11 0DX
www.dwwindsor.com | info@dwwindsor.com | +44 (0) 1992 474 600

LuxEOS Flood 18 - RGBW (2700K)

Intensities at Distance with 10x60° & 60x10° Optics



Beam intensities from 1-20m

1m	2m	3m	4m	5m	6m	7m	8m	9m	10m	11m	12m	13m	14m	15m	16m	17m	18m	19m	20m
3.3ft	6.6ft	9.8ft	13.1ft	16.4ft	19.7ft	23ft	26.2ft	29.5ft	32.8ft	36.1ft	39.4ft	42.7ft	45.9ft	49.2ft	52.5ft	55.8ft	59.1ft	62.3ft	65.6ft
15386lx	3847lx	1710lx	962lx	615lx	427lx	314lx	240lx	190lx	154lx	127lx	107lx	91lx	79lx	68lx	60lx	53lx	47lx	43lx	38lx
1429.5fc	357.4fc	158.8fc	89.3fc	57.2fc	39.7fc	29.2fc	22.3fc	17.6fc	14.3fc	11.8fc	9.9fc	8.5fc	7.3fc	6.4fc	5.6fc	4.9fc	4.4fc	4fc	3.6fc

Intensities in 0° c-plane

0°	2°	4°	6°	8°	10°	12°	14°	16°	18°	20°	22°	24°	26°	28°	30°	32°	34°	36°	38°
15.4K	14.4K	14.3K	14.1K	13.9K	13.7K	13.4K	13.1K	12.7K	12.1K	11.4K	10.6K	9.6K	8.5K	7.3K	6.2K	5.1K	4.1K	3.2K	2.4K
100%	94%	93%	92%	91%	89%	87%	85%	82%	79%	74%	69%	62%	55%	48%	40%	33%	27%	21%	16%

Intensities in 90° c-plane

0°	2°	4°	6°	8°	10°	12°	14°	16°	18°	20°	22°	24°	26°	28°	30°	32°	34°	36°	38°
15.4K	15.2K	11.3K	6.8K	3.7K	2.2K	1.5K	1.0K	0.7K	0.5K	0.4K	0.3K	0.2K	0.2K	0.2K	0.1K	0.1K	0.1K	0.1K	0.1K
100%	99%	73%	44%	24%	14%	9%	7%	5%	3%	3%	2%	2%	1%	1%	1%	1%	1%	1%	1%

Intensities in 180° c-plane

0°	2°	4°	6°	8°	10°	12°	14°	16°	18°	20°	22°	24°	26°	28°	30°	32°	34°	36°	38°
15.4K	14.4K	14.3K	14.1K	13.9K	13.7K	13.4K	13.1K	12.7K	12.1K	11.4K	10.6K	9.6K	8.5K	7.3K	6.2K	5.1K	4.1K	3.2K	2.4K
100%	94%	93%	92%	91%	89%	87%	85%	82%	79%	74%	69%	62%	55%	48%	40%	33%	27%	21%	16%

Intensities in 270° c-plane

0°	2°	4°	6°	8°	10°	12°	14°	16°	18°	20°	22°	24°	26°	28°	30°	32°	34°	36°	38°
15.4K	15.2K	11.3K	6.8K	3.7K	2.2K	1.5K	1.0K	0.7K	0.5K	0.4K	0.3K	0.2K	0.2K	0.2K	0.1K	0.1K	0.1K	0.1K	0.1K
100%	99%	73%	44%	24%	14%	9%	7%	5%	3%	3%	2%	2%	1%	1%	1%	1%	1%	1%	1%

Beam angle 50%	Field angle 10%	Cutoff angle 2,5%	Intensity ratio in 120° cone	Intensity ratio in 90° cone
25.5°	45.7°	66.1°	97.5%	94.0%

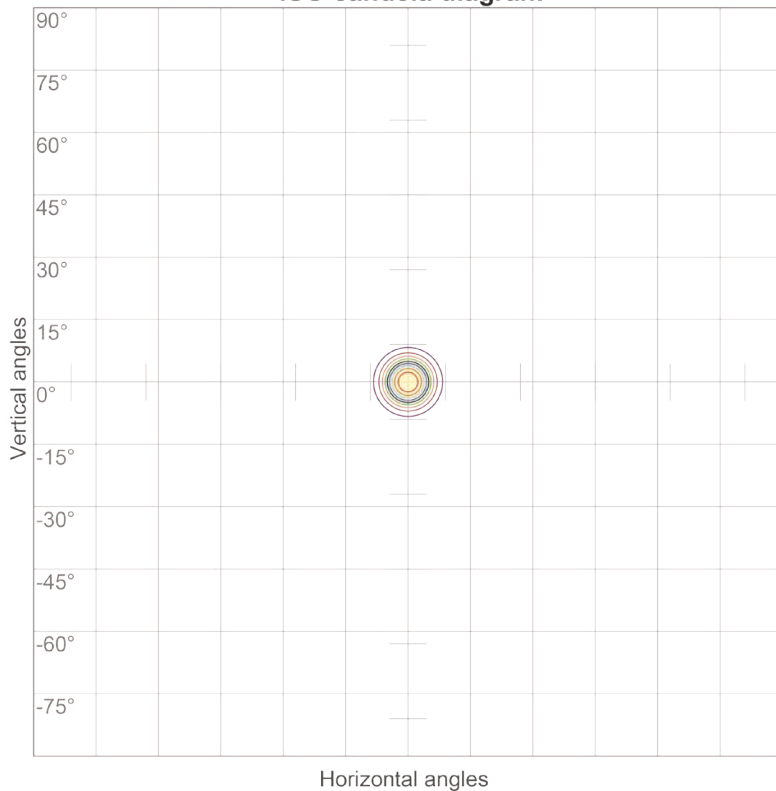
DW Windsor

Pindar Road, Hoddesdon, EN11 0DX
www.dwwindsor.com | info@dwwindsor.com | +44 (0) 1992 474 600

LuxEOS Flood 18 - RGBW (2700K) ISO Candela & ISO Lux diagrams with 10° Optics



ISO candela diagram



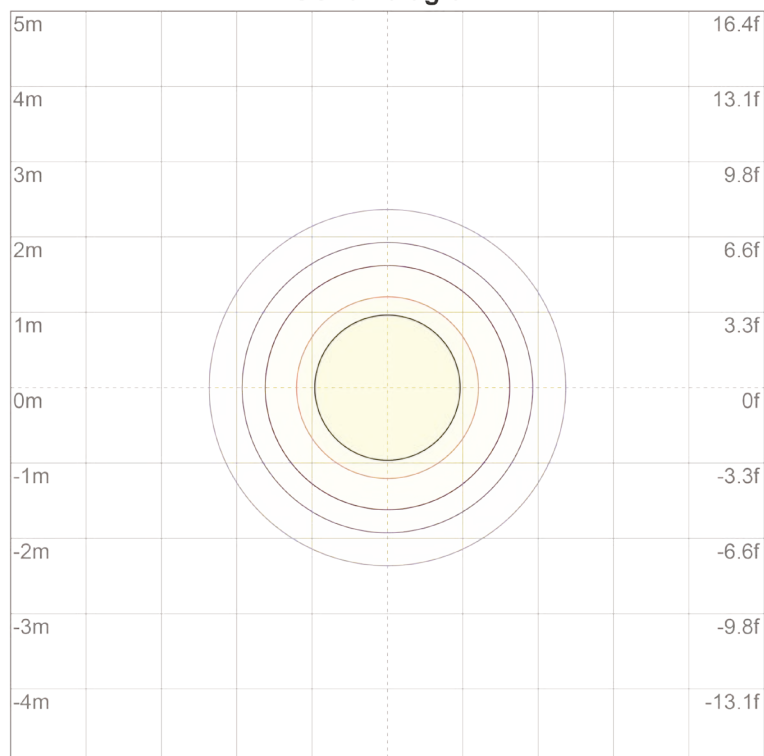
10%	8733 cd
20%	17465 cd
30%	26198 cd
40%	34931 cd
50%	43663 cd
60%	52396 cd
70%	61128 cd
80%	69861 cd
90%	78594 cd

Conditions:

Number of c-planes: 72

Candela at center: 87326 cd

ISO lux diagram



3%	26.2 lx
5%	43.7 lx
10%	87.3 lx
30%	262 lx
50%	437 lx

Conditions:

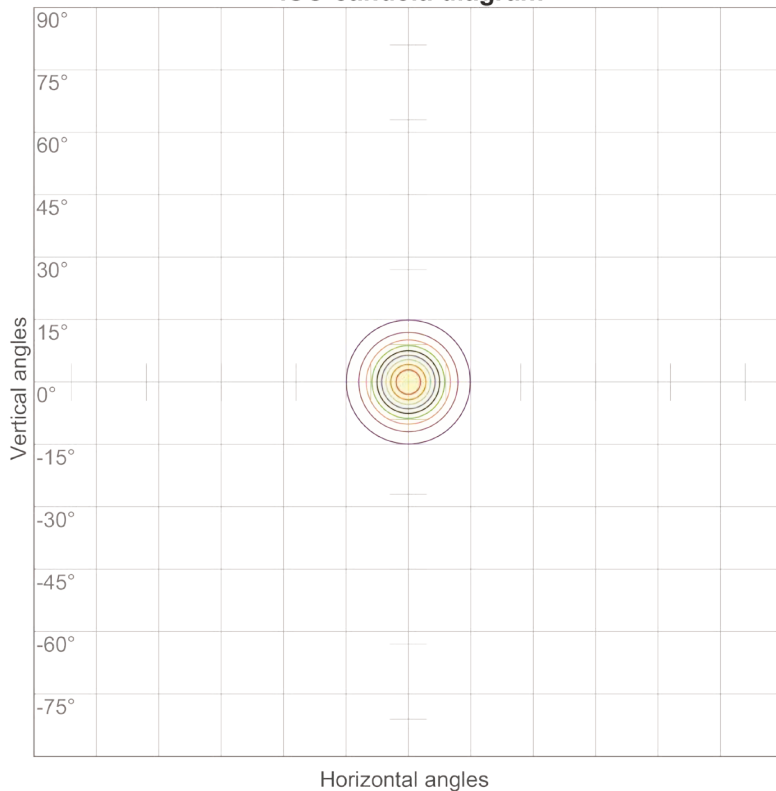
Number of c-planes: 72

Lux at center: 873 lx

*Lux distribution on a surface
when lamp is mounted at 10
meters from the surface.*



ISO candela diagram



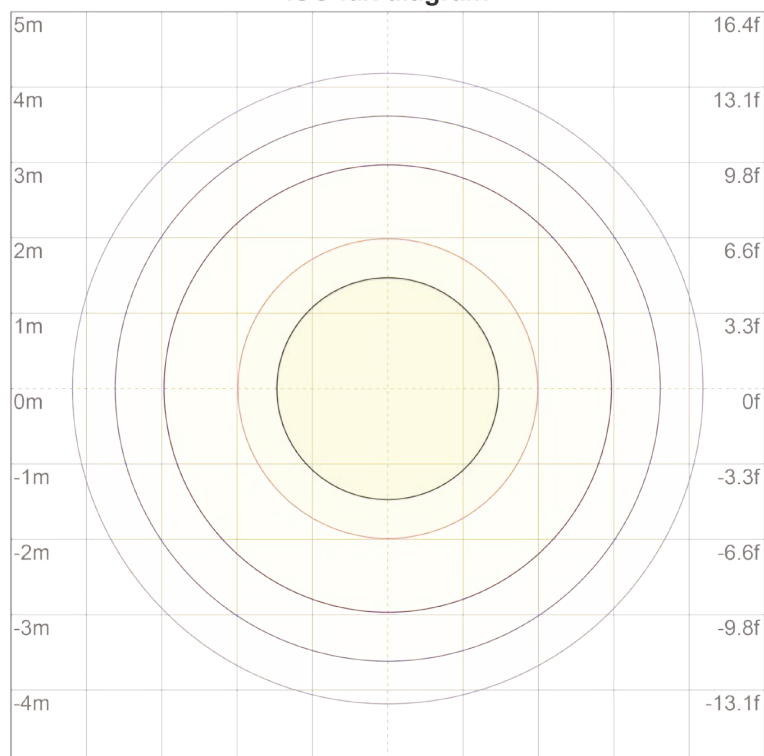
10%	3162 cd
20%	6325 cd
30%	9487 cd
40%	12649 cd
50%	15812 cd
60%	18974 cd
70%	22136 cd
80%	25299 cd
90%	28461 cd

Conditions:

Number of c-planes: 72

Candela at center: 31623 cd

ISO lux diagram



3%	9.49 lx
5%	15.8 lx
10%	31.6 lx
30%	94.9 lx
50%	158 lx

Conditions:

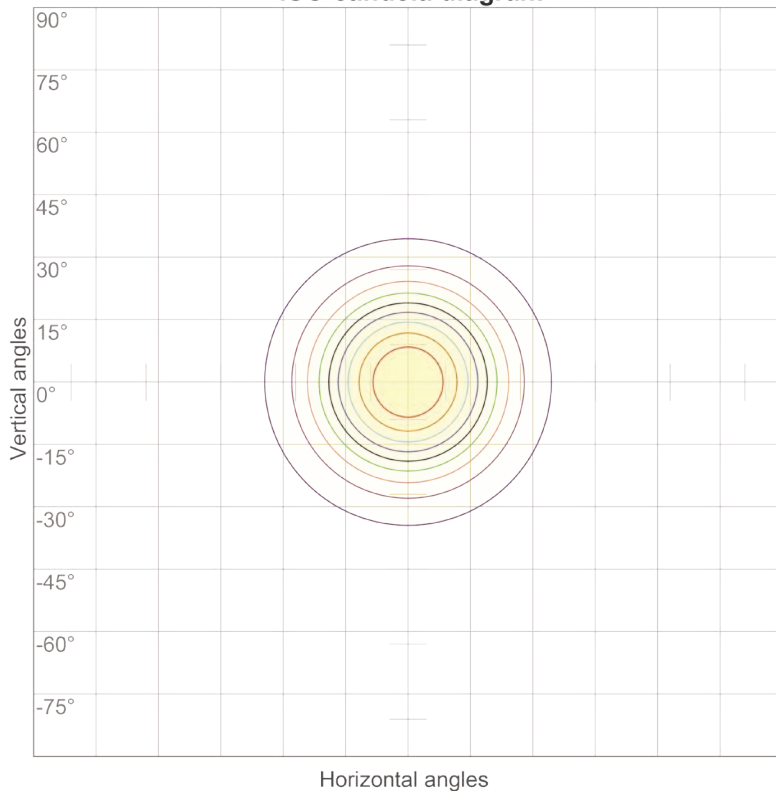
Number of c-planes: 72

Lux at center: 316 lx

*Lux distribution on a surface
when lamp is mounted at 10
meters from the surface.*



ISO candela diagram



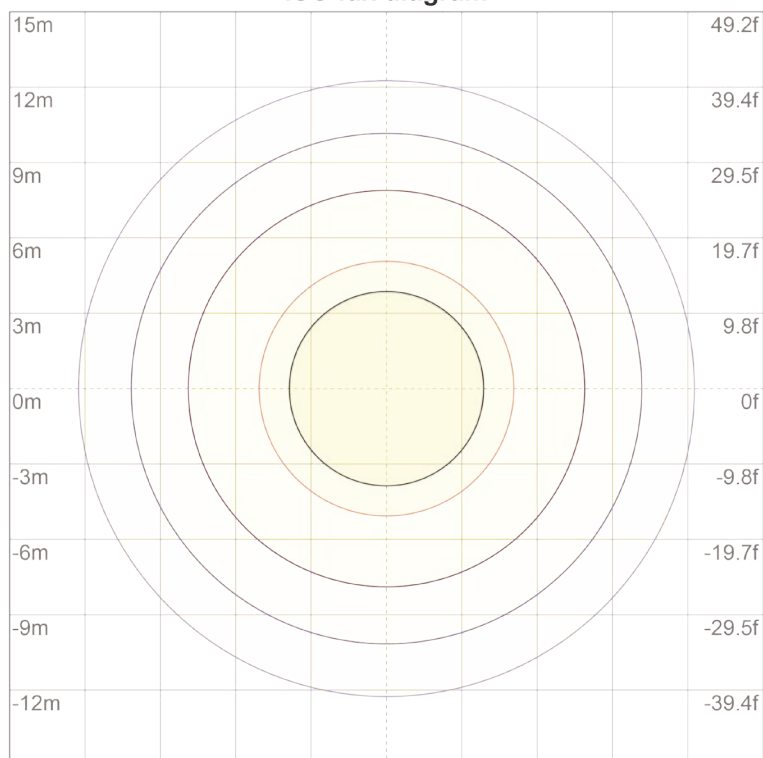
10%	621 cd
20%	1243 cd
30%	1864 cd
40%	2486 cd
50%	3107 cd
60%	3729 cd
70%	4350 cd
80%	4972 cd
90%	5593 cd

Conditions:

Number of c-planes: 72

Candela at center: 6215 cd

ISO lux diagram



3%	1.86 lx
5%	3.11 lx
10%	6.21 lx
30%	18.6 lx
50%	31.1 lx

Conditions:

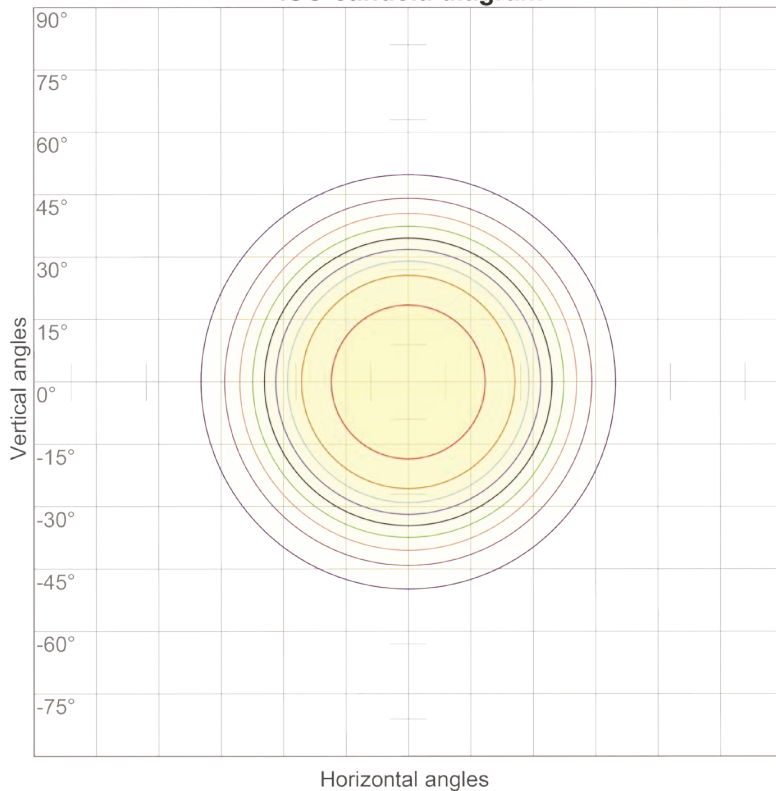
Number of c-planes: 72

Lux at center: 62.1 lx

*Lux distribution on a surface
when lamp is mounted at 10
meters from the surface.*



ISO candela diagram



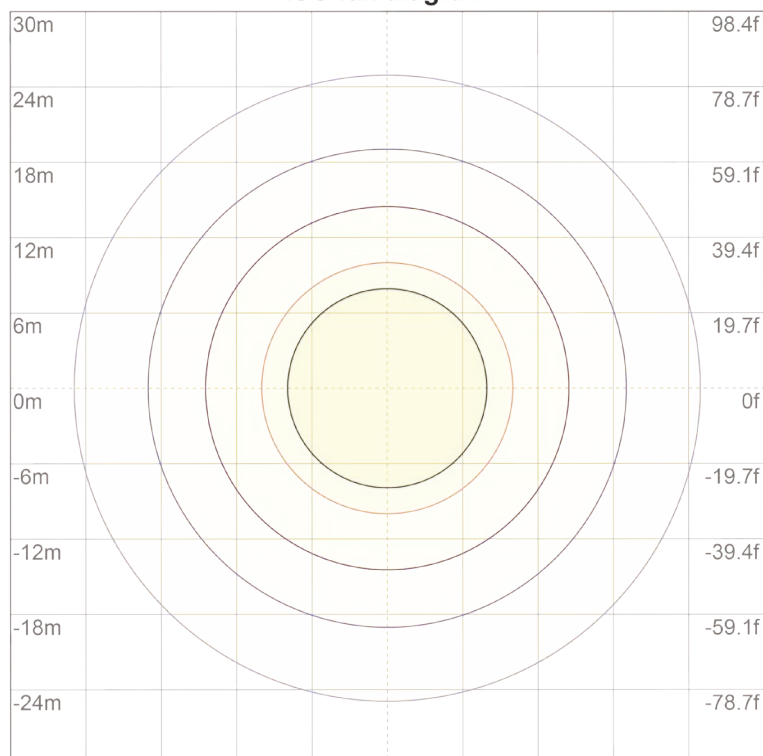
10%	255 cd
20%	509 cd
30%	764 cd
40%	1019 cd
50%	1274 cd
60%	1528 cd
70%	1783 cd
80%	2038 cd
90%	2292 cd

Conditions:

Number of c-planes: 72

Candela at center: 2547 cd

ISO lux diagram



3%	0.764 lx
5%	1.27 lx
10%	2.55 lx
30%	7.64 lx
50%	12.7 lx

Conditions:

Number of c-planes: 72

Lux at center: 25.5 lx

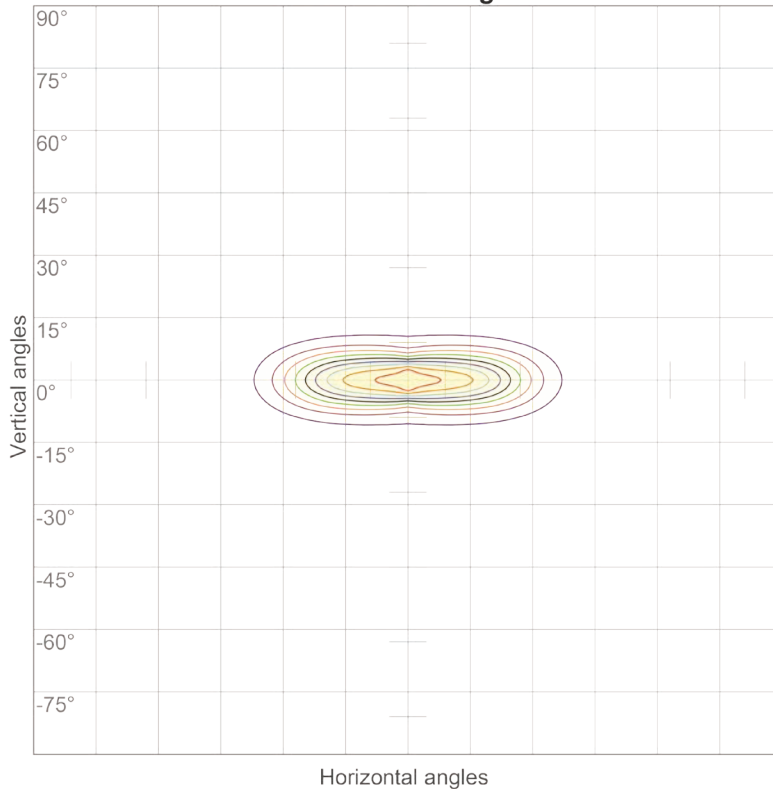
*Lux distribution on a surface
when lamp is mounted at 10
meters from the surface.*

LuxEOS Flood 18 - RGBW (2700K)

ISO Candela & ISO Lux diagrams with 10x60° & 60x10° Optics



ISO candela diagram



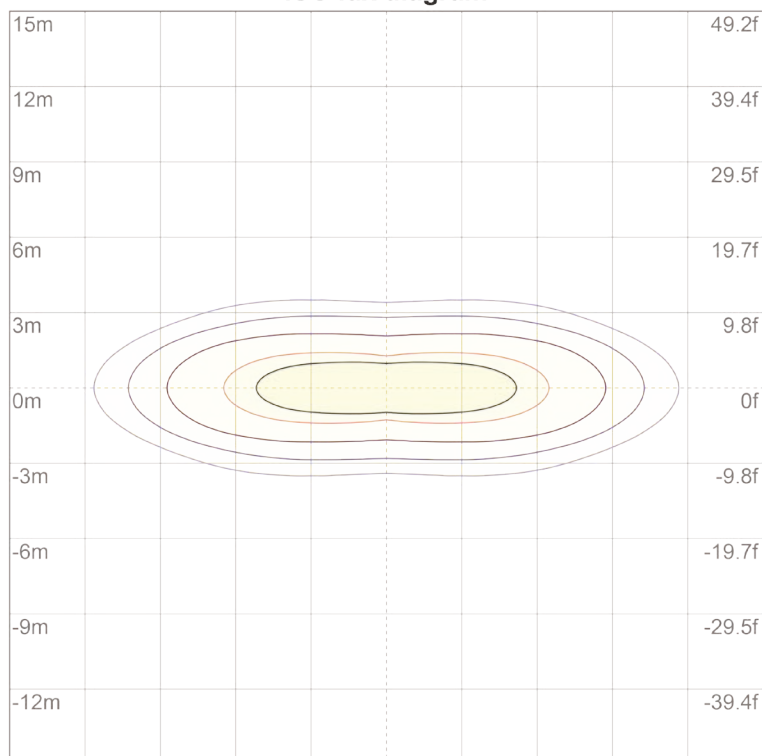
10%	1539 cd
20%	3077 cd
30%	4616 cd
40%	6155 cd
50%	7693 cd
60%	9232 cd
70%	10771 cd
80%	12309 cd
90%	13848 cd

Conditions:

Number of c-planes: 72

Candela at center: 15386 cd

ISO lux diagram



3%	4.62 lx
5%	7.69 lx
10%	15.4 lx
30%	46.2 lx
50%	76.9 lx

Conditions:

Number of c-planes: 72

Lux at center: 154 lx

*Lux distribution on a surface
when lamp is mounted at 10
meters from the surface.*

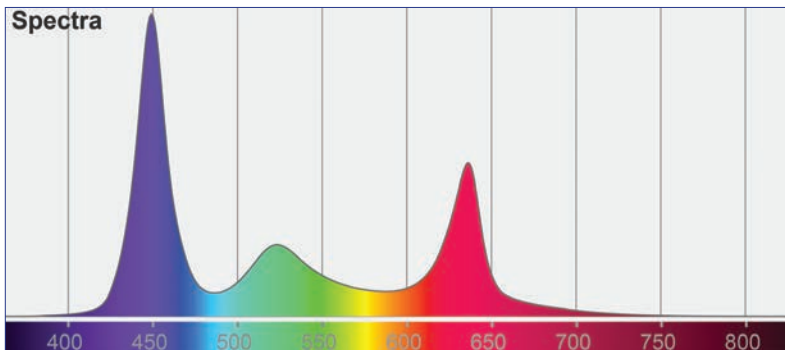
PULSAR

LuxEOS Flood 18 - RGBW (2700K)

Colormetrics **RGBW**



PHOTOMETRIC DATA



Total Lumen Output (Native) : 4120 lm

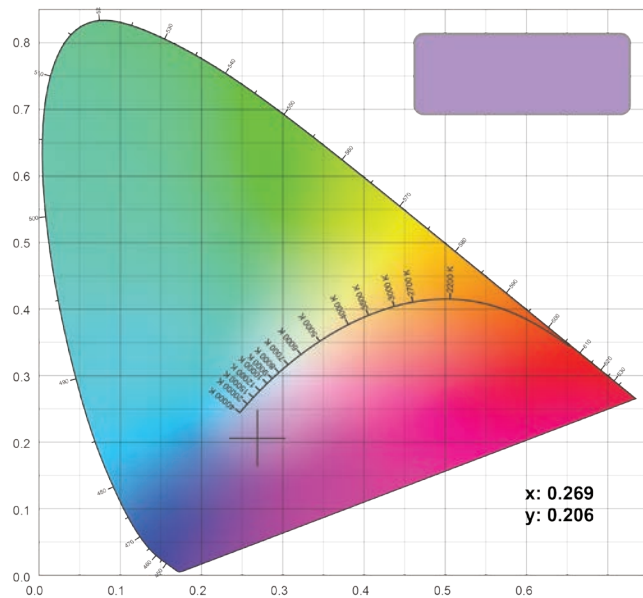
Efficacy : 34.3 lm/W

Voltage : 240V

Supply Power : 120W

Supply Power Factor : 0.97

CIE 1931



CIE 1931 Zoom



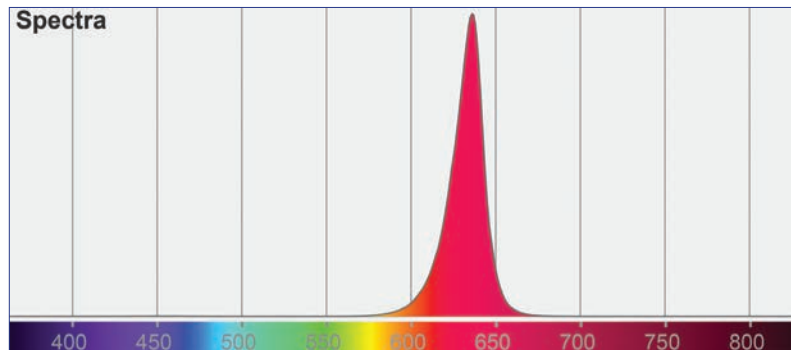
PULSAR

LuxEOS Flood 18 - RGBW (2700K)

Colormetrics **RED**

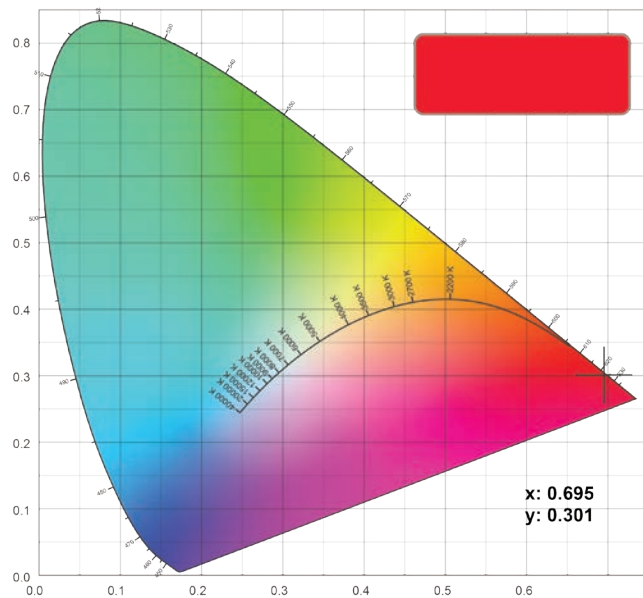


PHOTOMETRIC DATA

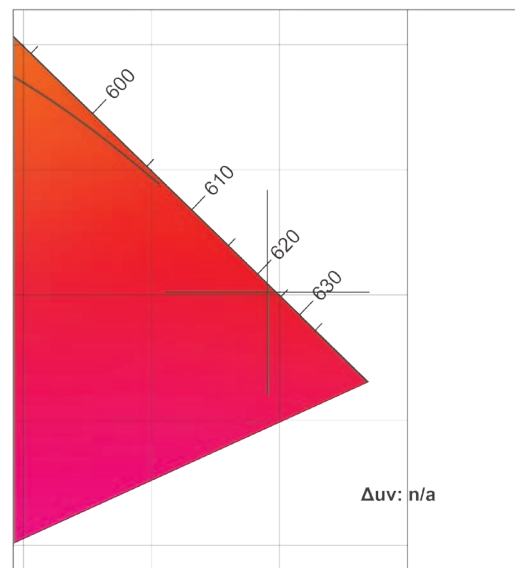


Red Lumen Output : 1054 lm

CIE 1931

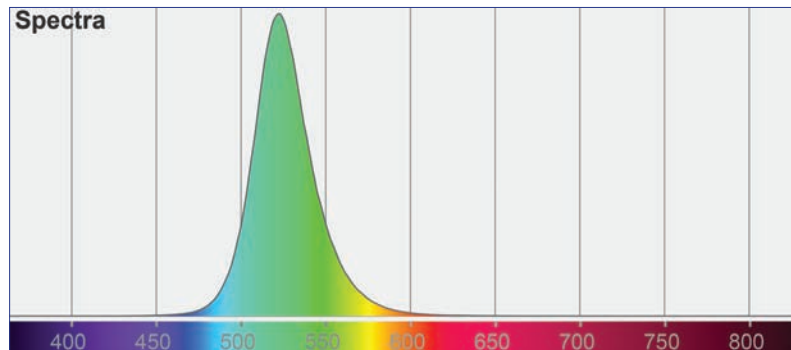


CIE 1931 Zoom



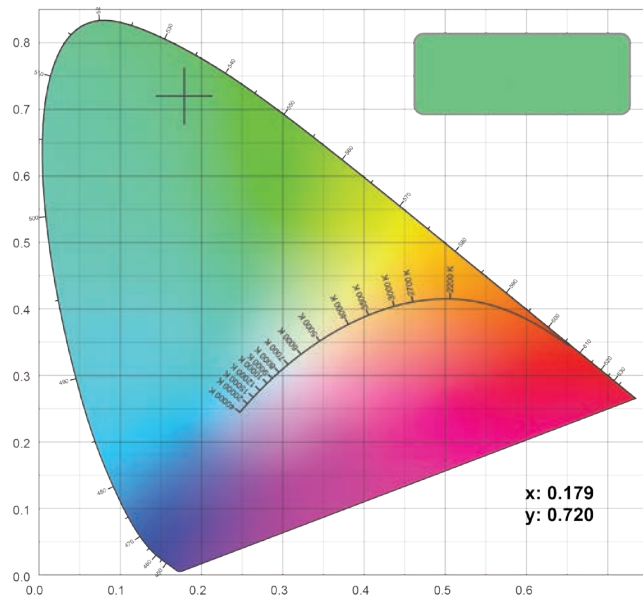
LuxEOS Flood 18 - RGBW (2700K)

Colormetrics **GREEN**

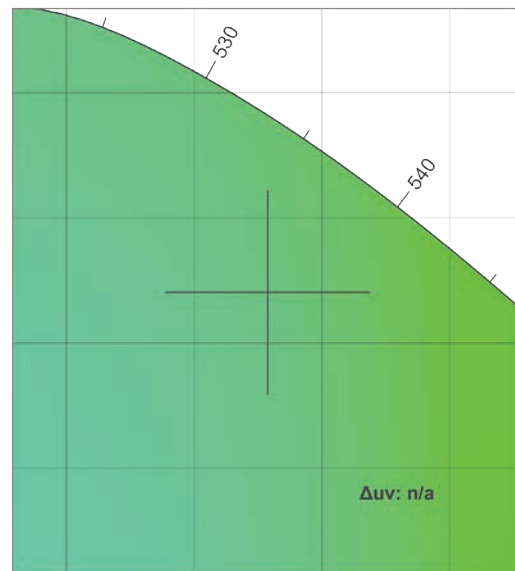


Green Lumen Output : 1618 lm

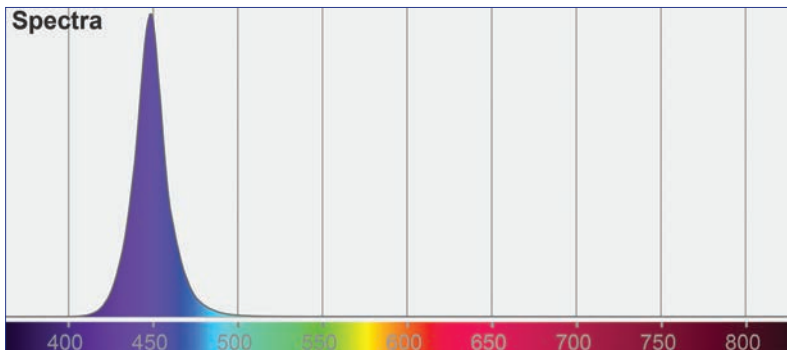
CIE 1931



CIE 1931 Zoom

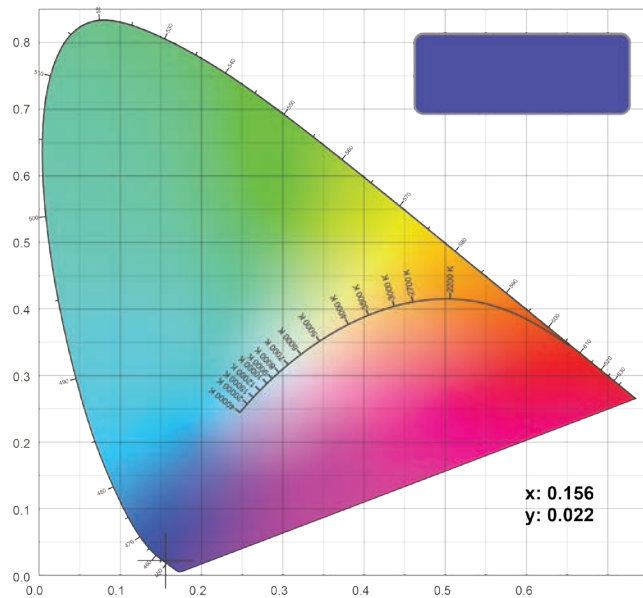


LuxEOS Flood 18 - RGBW (2700K) Colormetrics **BLUE**

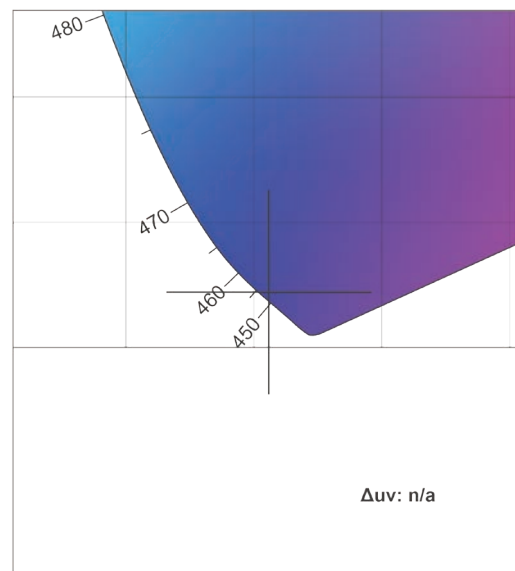


Blue Lumen Output : 356 lm

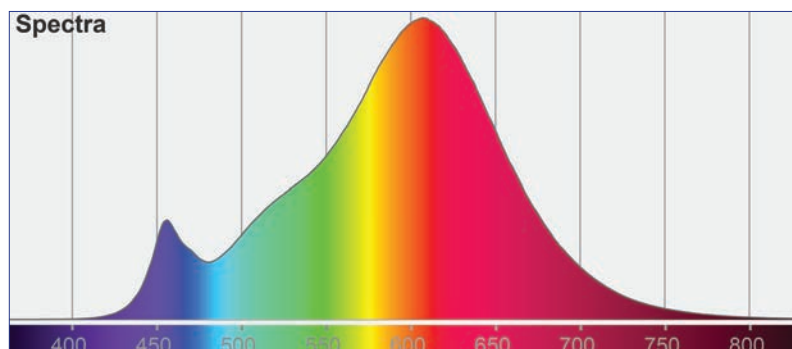
CIE 1931



CIE 1931 Zoom

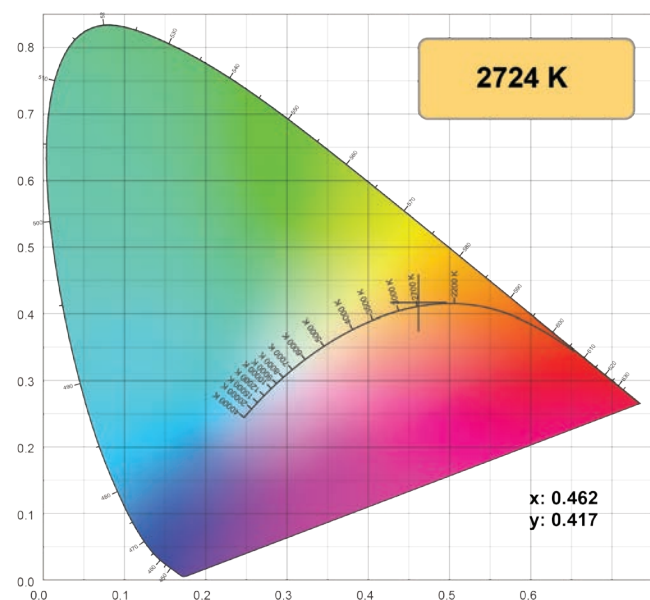


LuxEOS Flood 18 - RGBW (2700K) Colormetrics **White 2700K**

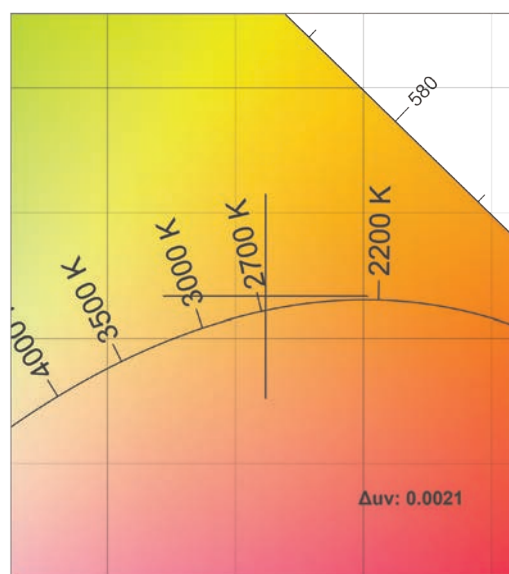


White 2700K Lumen Output : 2292 lm
CRI: 90

CIE 1931



CIE 1931 Zoom



Should further photometric variations be required, please contact our Head Office.

As part of our commitment to continuous improvement PULSAR may change the specifications of its products without prior notification or public announcement.
All descriptions, illustrations, drawings and specifications in this publication present only general particulars and shall not form part of any contract.

DW Windsor

Pindar Road, Hoddesdon, EN11 0DX
www.dwwindsor.com | info@dwwindsor.com | +44 (0) 1992 474 600