

LuxEOS Beam 80 VIVID COLOUR

ULTRA NARROW LED BEAM FOR ARCHITECTURAL LIGHTING



LuxEOS BEAM 80 TW (1700-5700K)
3° 3x60°

Tested By
DW Windsor Group Laboratory
Hoddesdon
UK

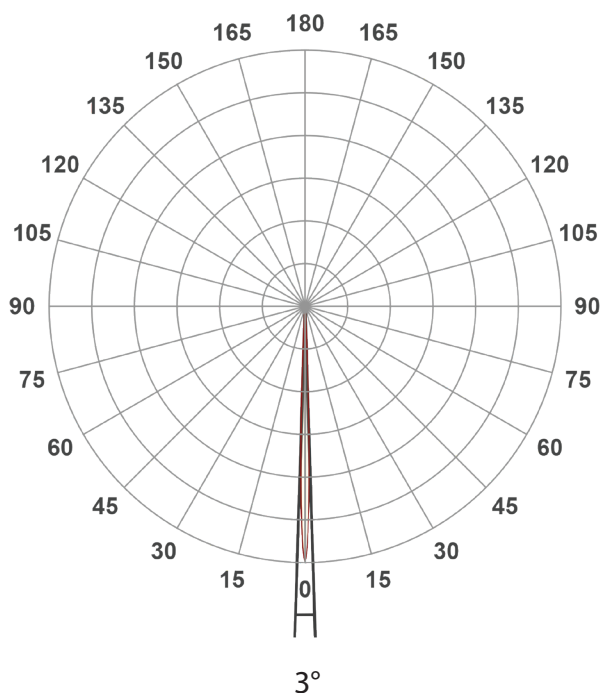
Date
Nov 2020

Dimensions
443mm (H) x 420mm (W) x 230mm (D) (including yoke)

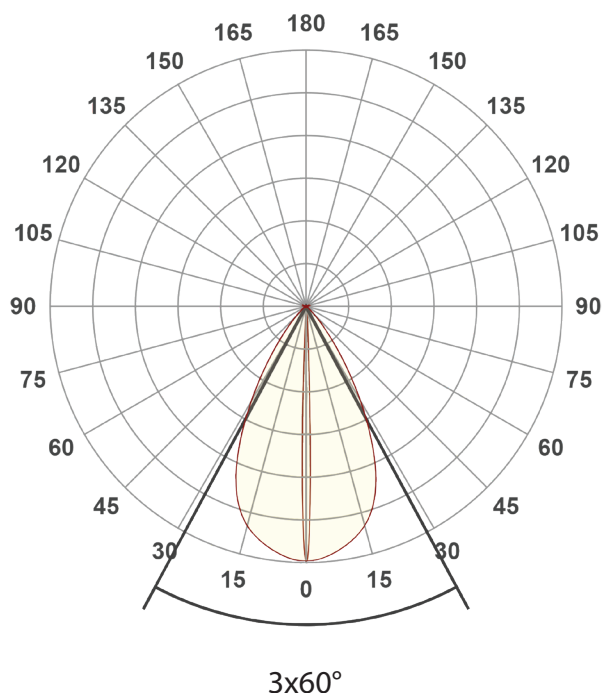
Weight
23.4 kgs (51.6lbs)

Polar Distribution

3° Conical Beam (Native)

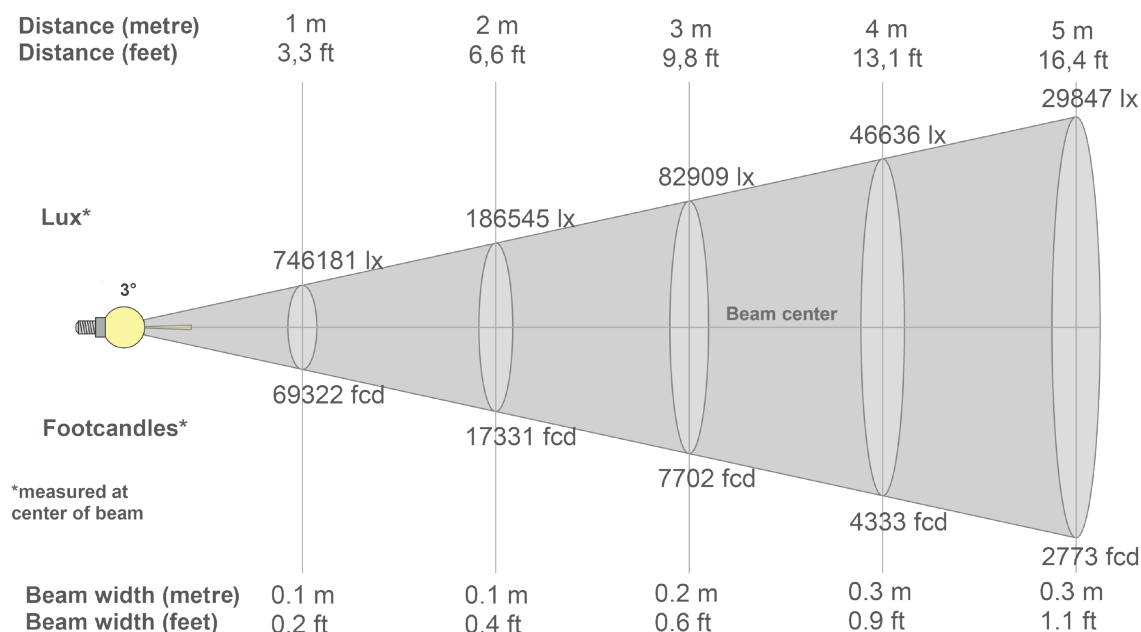


3x60° Elliptical Beam (With HBS)



LuxEOS BEAM 80 - TW (1700-5700K)

Intensities at Distance with native 3° Optics



Beam intensities from 1-20m

1m	2m	3m	4m	5m	6m	7m	8m	9m	10m	11m	12m	13m	14m	15m	16m	17m	18m	19m	20m
3.3ft	6.6ft	9.8ft	13.1ft	16.4ft	19.7ft	23ft	26.2ft	29.5ft	32.8ft	36.1ft	39.4ft	42.7ft	45.9ft	49.2ft	52.5ft	55.8ft	59.1ft	62.3ft	65.6ft
746181lx	186545lx	82909lx	46636lx	29847lx	20727lx	15228lx	11659lx	9212lx	7462lx	6167lx	5182lx	4415lx	3807lx	3316lx	2915lx	2582lx	2303lx	2067lx	1865lx
69322.4fc	17330.6fc	7702.5fc	4332.7fc	2772.9fc	1925.6fc	1414.7fc	1083.2fc	855.8fc	693.2fc	572.9fc	481.4fc	410.2fc	353.7fc	308.1fc	270.8fc	239.9fc	214fc	192fc	173.3fc

Intensities in 0° c-plane

0°	1°	2°	3°	4°	5°	6°	7°	8°	9°	10°	11°	12°	13°	14°	15°	16°	17°	18°	19°
746K	614K	335K	130K	46K	21K	14K	10K	7K	6K	5K	4K	3K	2K	2K	2K	1K	1K	1K	1K
100%	82%	45%	17%	6%	3%	2%	1%	1%	1%	1%	0%	0%	0%	0%	0%	0%	0%	0%	0%

Intensities in 90° c-plane

0°	1°	2°	3°	4°	5°	6°	7°	8°	9°	10°	11°	12°	13°	14°	15°	16°	17°	18°	19°
746K	614K	335K	130K	46K	21K	14K	10K	7K	6K	5K	4K	3K	2K	2K	2K	1K	1K	1K	1K
100%	82%	45%	17%	6%	3%	2%	1%	1%	1%	1%	0%	0%	0%	0%	0%	0%	0%	0%	0%

Intensities in 180° c-plane

0°	1°	2°	3°	4°	5°	6°	7°	8°	9°	10°	11°	12°	13°	14°	15°	16°	17°	18°	19°
746K	614K	335K	130K	46K	21K	14K	10K	7K	6K	5K	4K	3K	2K	2K	2K	1K	1K	1K	1K
100%	82%	45%	17%	6%	3%	2%	1%	1%	1%	1%	0%	0%	0%	0%	0%	0%	0%	0%	0%

Intensities in 270° c-plane

0°	1°	2°	3°	4°	5°	6°	7°	8°	9°	10°	11°	12°	13°	14°	15°	16°	17°	18°	19°
746K	614K	335K	130K	46K	21K	14K	10K	7K	6K	5K	4K	3K	2K	2K	2K	1K	1K	1K	1K
100%	82%	45%	17%	6%	3%	2%	1%	1%	1%	1%	0%	0%	0%	0%	0%	0%	0%	0%	0%

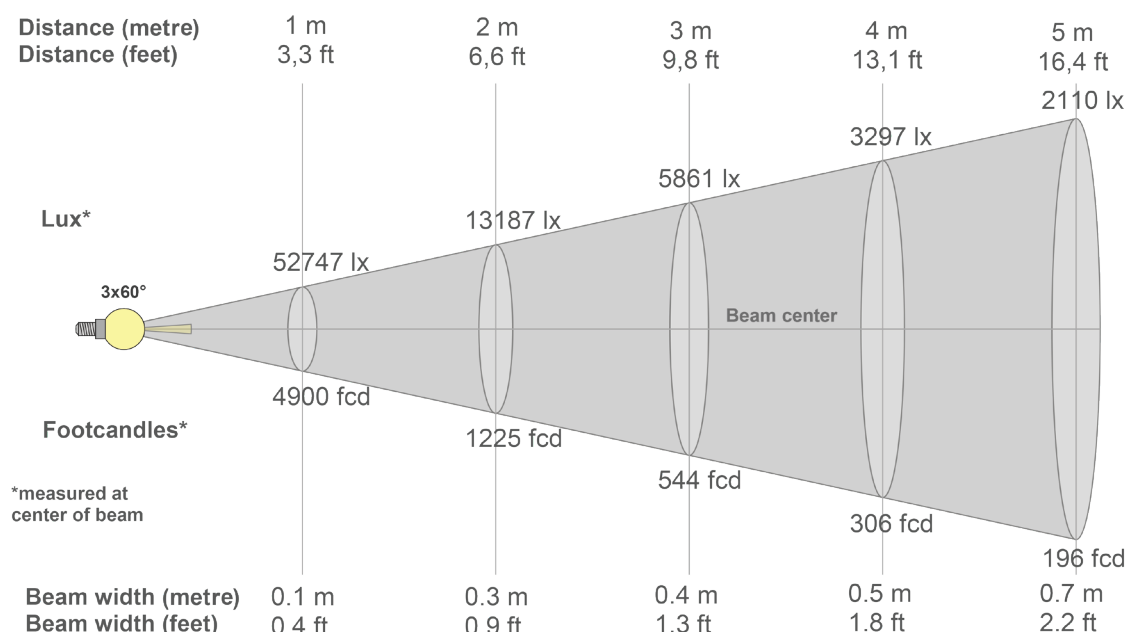
Beam angle 50%	Field angle 10%	Cutoff angle 2,5%	Intensity ratio in 120° cone	Intensity ratio in 90° cone
3.7°	7°	10.5°	94.0%	92.2%

DW Windsor

Pindar Road, Hoddesdon, EN11 0DX
www.dwwindsor.com | info@dwwindsor.com | +44 (0) 1992 474 600

LuxEOS BEAM 80 - TW (1700-5700K

Intensities at Distance with 3x60° Optics



Beam intensities from 1-20m

1m	2m	3m	4m	5m	6m	7m	8m	9m	10m	11m	12m	13m	14m	15m	16m	17m	18m	19m	20m
3.3ft	6.6ft	9.8ft	13.1ft	16.4ft	19.7ft	23ft	26.2ft	29.5ft	32.8ft	36.1ft	39.4ft	42.7ft	45.9ft	49.2ft	52.5ft	55.8ft	59.1ft	62.3ft	65.6ft
52747lx	13187lx	5861lx	3297lx	2110lx	1465lx	1076lx	824lx	651lx	527lx	436lx	366lx	312lx	269lx	234lx	206lx	183lx	163lx	146lx	132lx
4900.4fc	1225.1fc	544.5fc	306.3fc	196fc	136.1fc	100fc	76.6fc	60.5fc	49fc	40.5fc	34fc	29fc	25fc	21.8fc	19.1fc	17fc	15.1fc	13.6fc	12.3fc

Intensities in 0° c-plane

0°	1°	2°	3°	4°	5°	6°	7°	8°	9°	10°	11°	12°	13°	14°	15°	16°	17°	18°	19°
52.7K	47.2K	31.3K	16.8K	8.6K	5.1K	3.6K	2.9K	2.4K	2.0K	1.6K	1.4K	1.2K	1.0K	0.9K	0.8K	0.7K	0.7K	0.6K	0.5K
100%	90%	59%	32%	16%	10%	7%	5%	4%	4%	3%	3%	2%	2%	2%	2%	1%	1%	1%	1%

Intensities in 90° c-plane

0°	1°	2°	3°	4°	5°	6°	7°	8°	9°	10°	11°	12°	13°	14°	15°	16°	17°	18°	19°
52.7K	53.1K	53.0K	52.6K	52.0K	51.5K	50.9K	50.3K	49.5K	48.7K	47.7K	46.7K	45.5K	44.3K	42.9K	41.5K	40.0K	38.4K	36.7K	35.0K
100%	101%	100%	100%	99%	98%	97%	95%	94%	92%	90%	88%	86%	84%	81%	79%	76%	73%	70%	66%

Intensities in 180° c-plane

0°	1°	2°	3°	4°	5°	6°	7°	8°	9°	10°	11°	12°	13°	14°	15°	16°	17°	18°	19°
52.7K	47.2K	31.3K	16.8K	8.6K	5.1K	3.6K	2.9K	2.4K	2.0K	1.6K	1.4K	1.2K	1.0K	0.9K	0.8K	0.7K	0.7K	0.6K	0.5K
100%	90%	59%	32%	16%	10%	7%	5%	4%	4%	3%	3%	2%	2%	2%	2%	1%	1%	1%	1%

Intensities in 270° c-plane

0°	1°	2°	3°	4°	5°	6°	7°	8°	9°	10°	11°	12°	13°	14°	15°	16°	17°	18°	19°
52.7K	53.1K	53.0K	52.6K	52.0K	51.5K	50.9K	50.3K	49.5K	48.7K	47.7K	46.7K	45.5K	44.3K	42.9K	41.5K	40.0K	38.4K	36.7K	35.0K
100%	101%	100%	100%	99%	98%	97%	95%	94%	92%	90%	88%	86%	84%	81%	79%	76%	73%	70%	66%

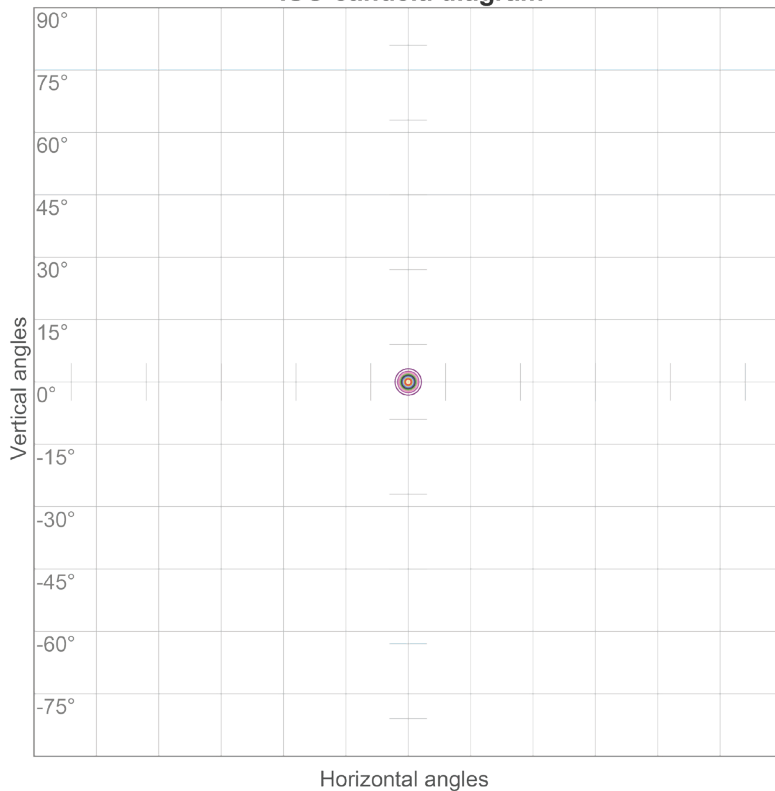
Beam angle 50%	Field angle 10%	Cutoff angle 2,5%	Intensity ratio in 120° cone	Intensity ratio in 90° cone
7.8°	15.1°	28.5°	97.4%	93.7%

DW Windsor

Pindar Road, Hoddesdon, EN11 0DX
www.dwwindsor.com | info@dwwindsor.com | +44 (0) 1992 474 600



ISO candela diagram



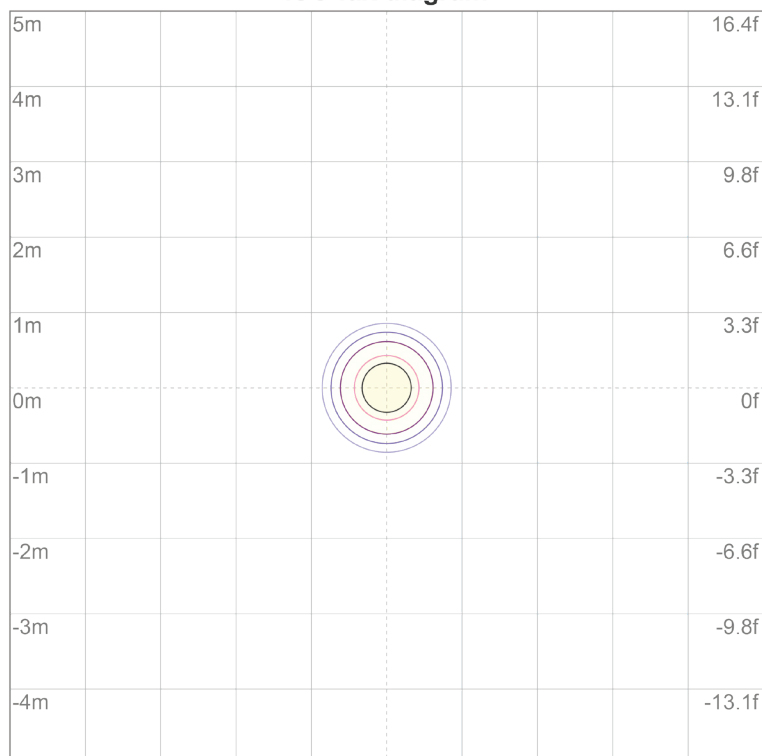
10%	74618 cd
20%	149236 cd
30%	223854 cd
40%	298472 cd
50%	373090 cd
60%	447708 cd
70%	522326 cd
80%	596944 cd
90%	671563 cd

Conditions:

Number of c-planes: 72

Candela at center: 746181 cd

ISO lux diagram



3%	224 lx
5%	373 lx
10%	746 lx
30%	2239 lx
50%	3731 lx

Conditions:

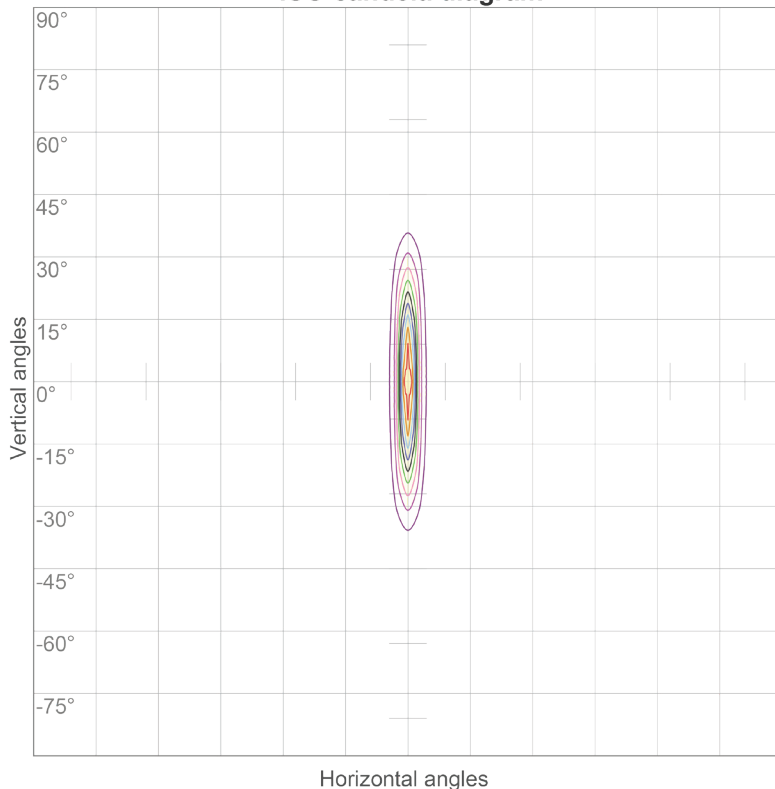
Number of c-planes: 72

Lux at center: 7462 lx

*Lux distribution on a surface
when lamp is mounted at 10
meters from the surface.*



ISO candela diagram



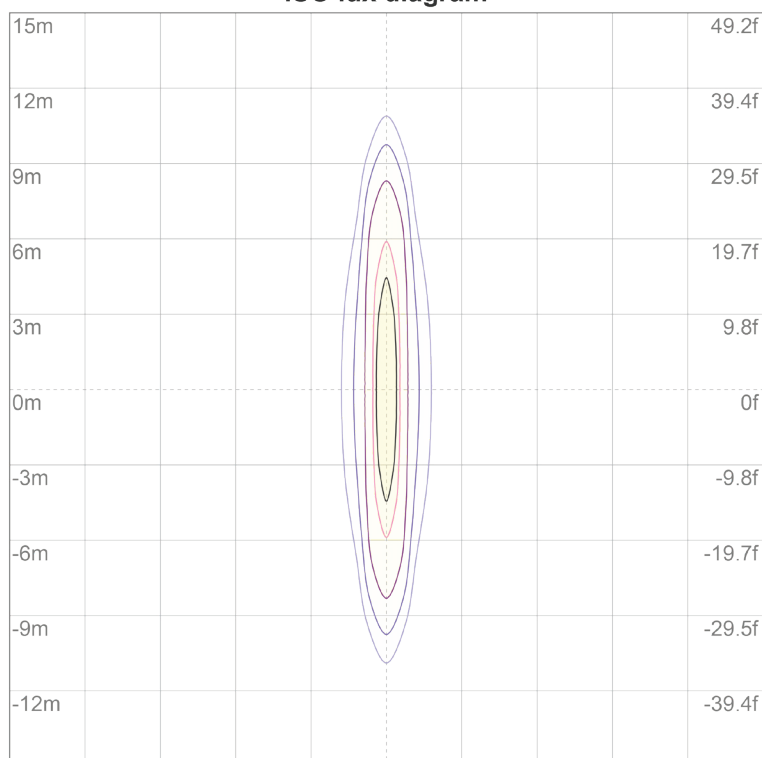
10%	5275 cd
20%	10549 cd
30%	15824 cd
40%	21099 cd
50%	26374 cd
60%	31648 cd
70%	36923 cd
80%	42198 cd
90%	47472 cd

Conditions:

Number of c-planes: 72

Candela at center: 52747 cd

ISO lux diagram



3%	15.8 lx
5%	26.4 lx
10%	52.7 lx
30%	158 lx
50%	264 lx

Conditions:

Number of c-planes: 72

Lux at center: 527 lx

*Lux distribution on a surface
when lamp is mounted at 10
meters from the surface.*

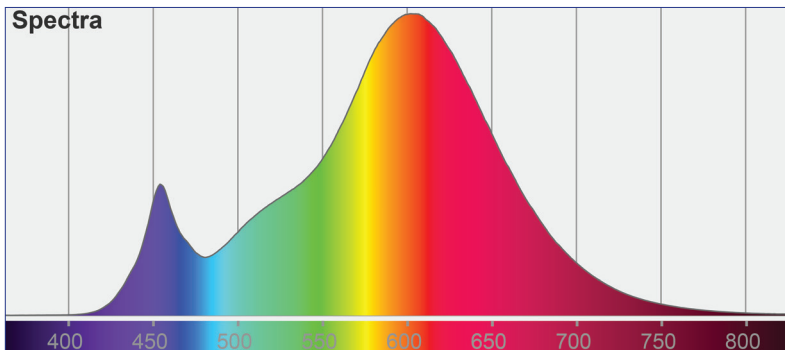
PULSAR

LuxEOS BEAM 80 - TW (1700-5700K)

Colormetrics **1700K, 2700K, 5700K** (All channels on)



PHOTOMETRIC DATA



Total Lumen Output (Native): 8424 lm

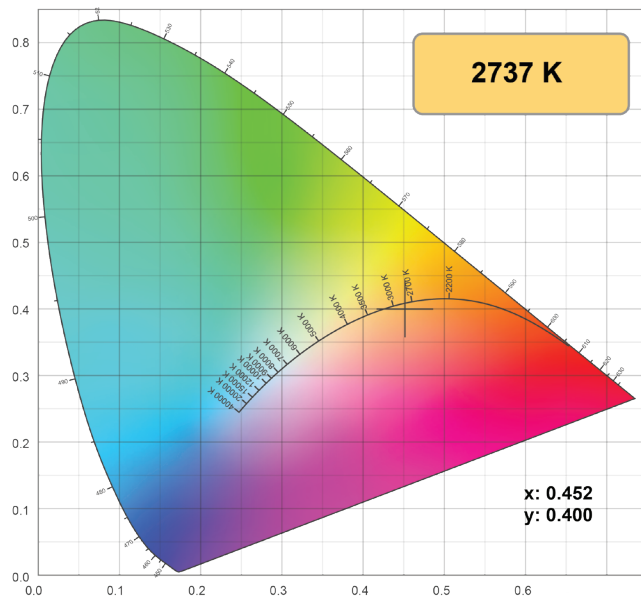
Efficacy : 47 lm/W

Voltage : 240V

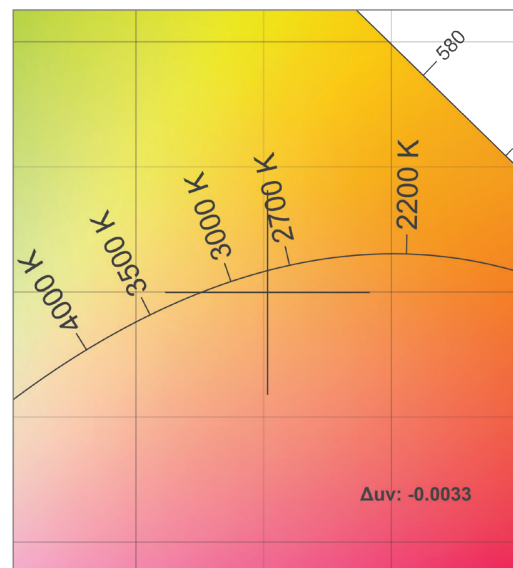
Supply Power : 180W

Supply Power Factor : 0.97

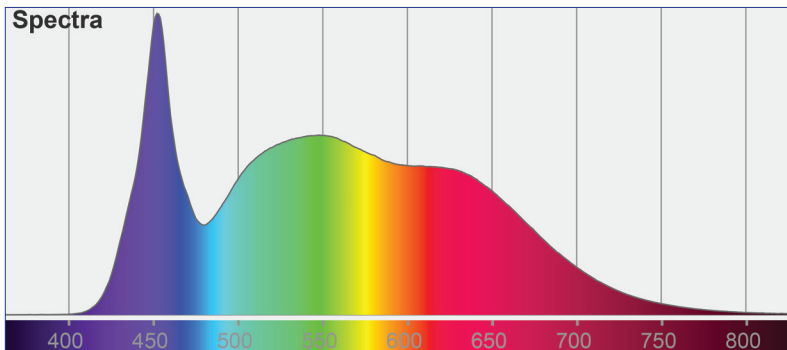
CIE 1931



CIE 1931 Zoom

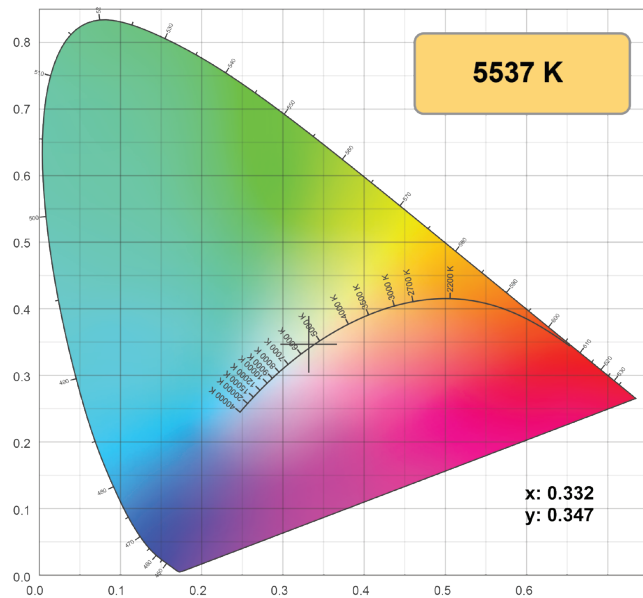


LuxEOS BEAM 80 - TW (1700-5700K) Colormetrics **5700K**

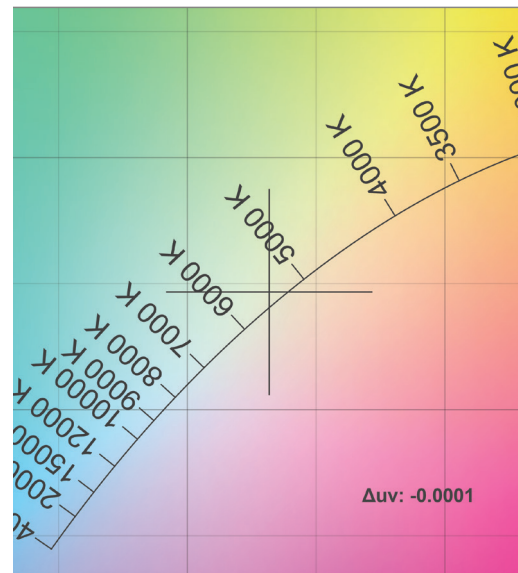


White 5700K Lumen Output : 2768 lm
CRI: 90

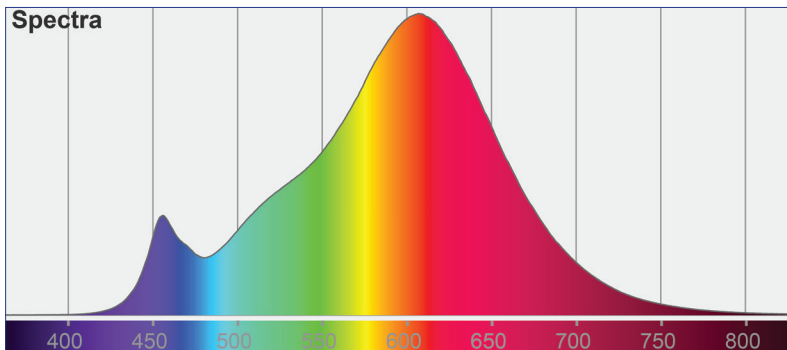
CIE 1931



CIE 1931 Zoom

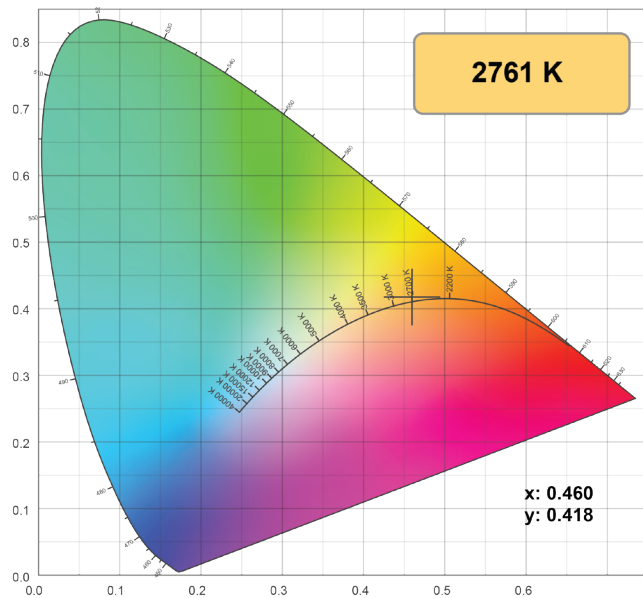


LuxEOS BEAM 80 - TW (1700-5700K) Colormetrics **2700K**

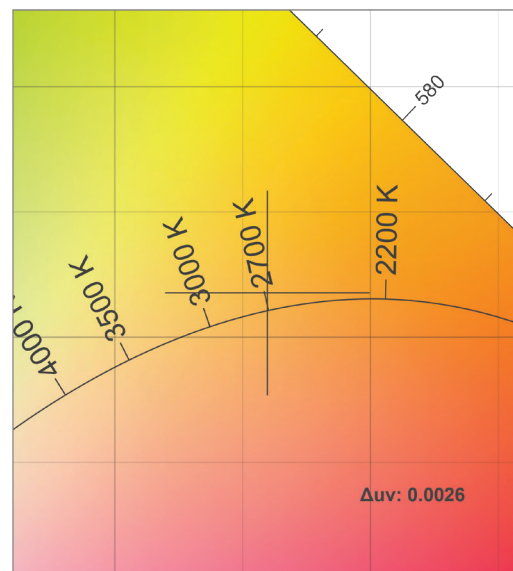


White 2700K Lumen Output : 3175 lm
CRI: 90

CIE 1931



CIE 1931 Zoom

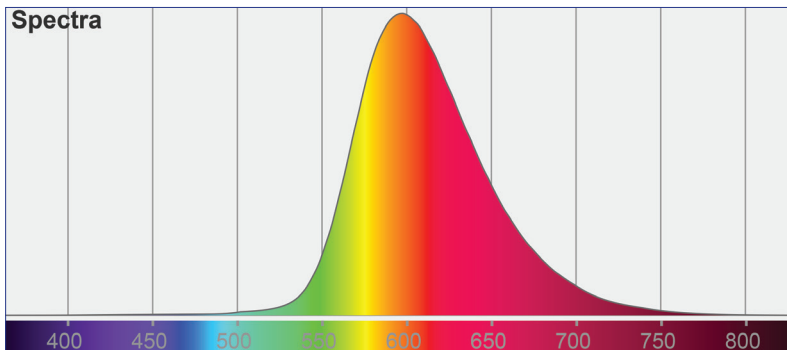


PULSAR

LuxEOS BEAM 80 - TW (1700-5700K)
Colormetrics **1700K**

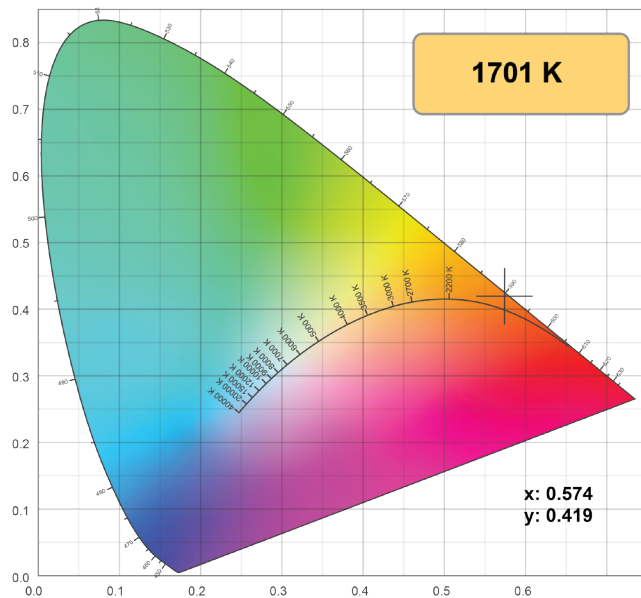


PHOTOMETRIC DATA

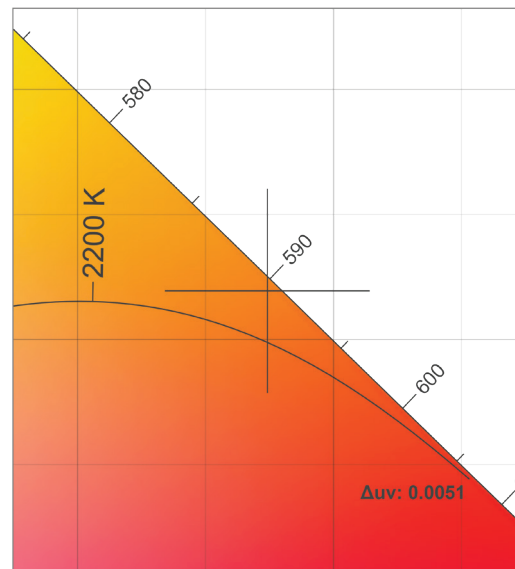


Amber 1700K Lumen Output : 2436 lm

CIE 1931



CIE 1931 Zoom



Should further photometric variations be required, please contact our Head Office.

As part of our commitment to continuous improvement PULSAR may change the specifications of its products without prior notification or public announcement.
All descriptions, illustrations, drawings and specifications in this publication present only general particulars and shall not form part of any contract.

DW Windsor

Pindar Road, Hoddesdon, EN11 0DX
www.dwwindsor.com | info@dwwindsor.com | +44 (0) 1992 474 600