

LuxEOS Flood 9 VIVID COLOUR

LED FLOOD FOR ARCHITECTURAL LIGHTING



LuxEOS Flood 9 - RGBW (5700K)
10° 20° 40° 80° 10x60° 60x10°

Tested By
DW Windsor Group Laboratory
Hoddesdon
UK

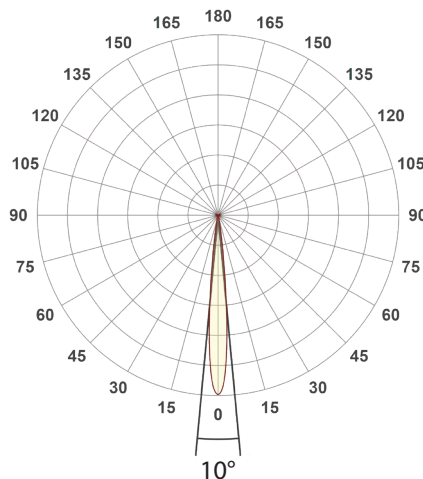
Date
Nov 2020

Dimensions
350mm (H) x 255mm (W) x 150mm (D) (including yoke)

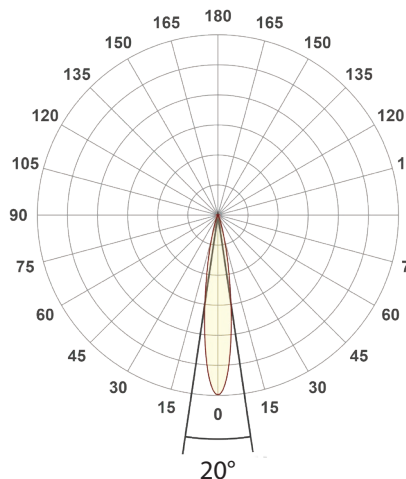
Weight
7.2 kgs (15.9lbs)

Polar Distribution

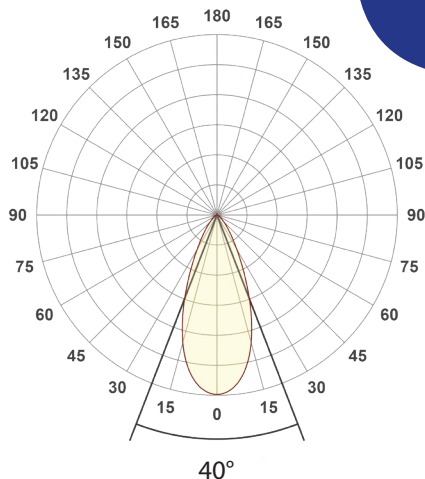
10° Conical Beam (Native)



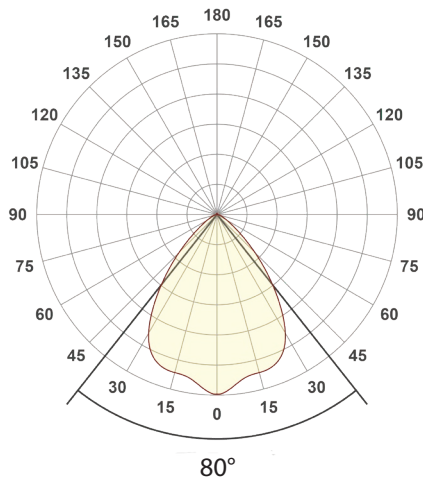
20° Conical Beam (With HBS)



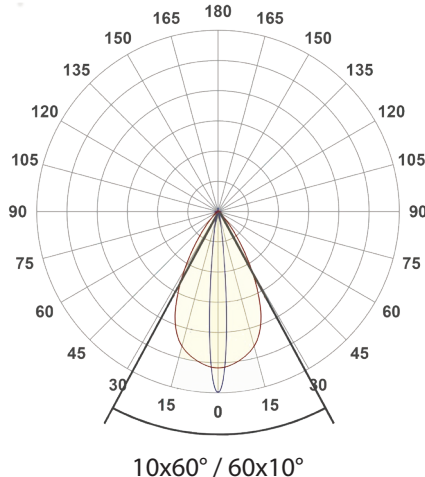
40° Conical Beam (With HBS)



80° Conical Beam (With HBS)

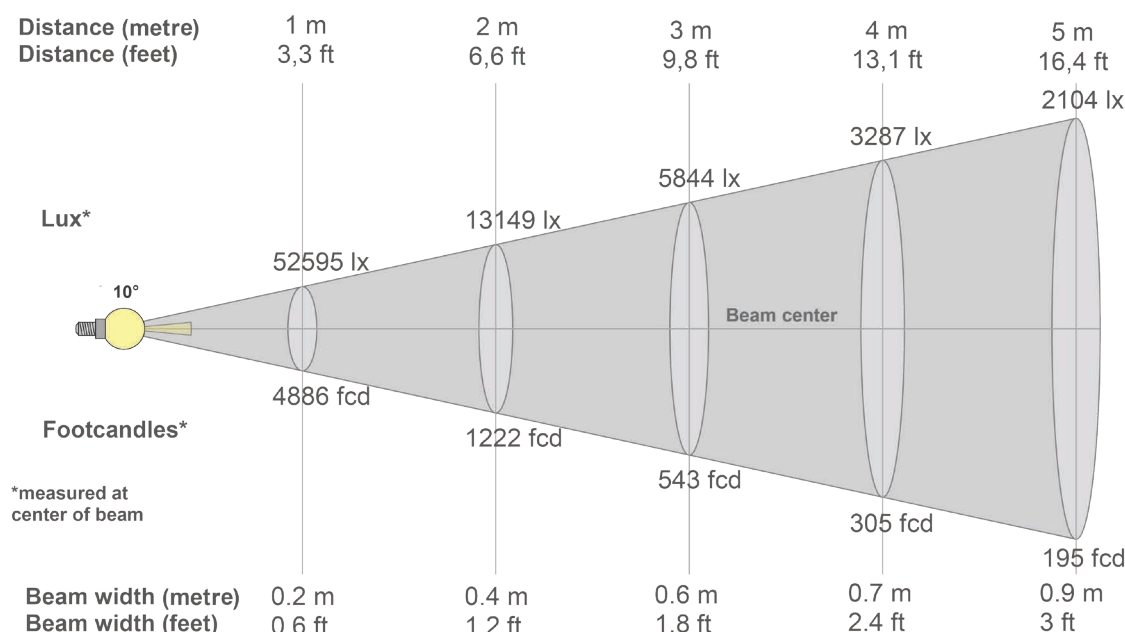


10x60° / 60x10° Elliptical Beam (With HBS)



LuxEOS Flood 9 - RGBW (5700K)

Intensities at Distance with native 10° Optics



Beam intensities from 1-20m

1m	2m	3m	4m	5m	6m	7m	8m	9m	10m	11m	12m	13m	14m	15m	16m	17m	18m	19m	20m
3.3ft	6.6ft	9.8ft	13.1ft	16.4ft	19.7ft	23ft	26.2ft	29.5ft	32.8ft	36.1ft	39.4ft	42.7ft	45.9ft	49.2ft	52.5ft	55.8ft	59.1ft	62.3ft	65.6ft
52595lx	13149lx	5844lx	3287lx	2104lx	1461lx	1073lx	822lx	649lx	526lx	435lx	365lx	311lx	268lx	234lx	205lx	182lx	162lx	146lx	131lx
4886.3fc	1221.6fc	542.9fc	305.4fc	195.5fc	135.7fc	99.7fc	76.3fc	60.3fc	48.9fc	40.4fc	33.9fc	28.9fc	24.9fc	21.7fc	19.1fc	16.9fc	15.1fc	13.5fc	12.2fc

Intensities in 0° c-plane

0°	1°	2°	3°	4°	5°	6°	7°	8°	9°	10°	11°	12°	13°	14°	15°	16°	17°	18°	19°
52.6K	51.7K	48.9K	43.8K	36.8K	28.8K	20.8K	14.1K	9.1K	5.8K	3.9K	2.8K	2.2K	1.9K	1.6K	1.3K	1.1K	0.9K	0.7K	0.5K
100%	98%	93%	83%	70%	55%	40%	27%	17%	11%	7%	5%	4%	4%	3%	3%	2%	2%	1%	1%

Intensities in 90° c-plane

0°	1°	2°	3°	4°	5°	6°	7°	8°	9°	10°	11°	12°	13°	14°	15°	16°	17°	18°	19°
52.6K	51.7K	48.9K	43.8K	36.8K	28.8K	20.8K	14.1K	9.1K	5.8K	3.9K	2.8K	2.2K	1.9K	1.6K	1.3K	1.1K	0.9K	0.7K	0.5K
100%	98%	93%	83%	70%	55%	40%	27%	17%	11%	7%	5%	4%	4%	3%	3%	2%	2%	1%	1%

Intensities in 180° c-plane

0°	1°	2°	3°	4°	5°	6°	7°	8°	9°	10°	11°	12°	13°	14°	15°	16°	17°	18°	19°
52.6K	51.7K	48.9K	43.8K	36.8K	28.8K	20.8K	14.1K	9.1K	5.8K	3.9K	2.8K	2.2K	1.9K	1.6K	1.3K	1.1K	0.9K	0.7K	0.5K
100%	98%	93%	83%	70%	55%	40%	27%	17%	11%	7%	5%	4%	4%	3%	3%	2%	2%	1%	1%

Intensities in 270° c-plane

0°	1°	2°	3°	4°	5°	6°	7°	8°	9°	10°	11°	12°	13°	14°	15°	16°	17°	18°	19°
52.6K	51.7K	48.9K	43.8K	36.8K	28.8K	20.8K	14.1K	9.1K	5.8K	3.9K	2.8K	2.2K	1.9K	1.6K	1.3K	1.1K	0.9K	0.7K	0.5K
100%	98%	93%	83%	70%	55%	40%	27%	17%	11%	7%	5%	4%	4%	3%	3%	2%	2%	1%	1%

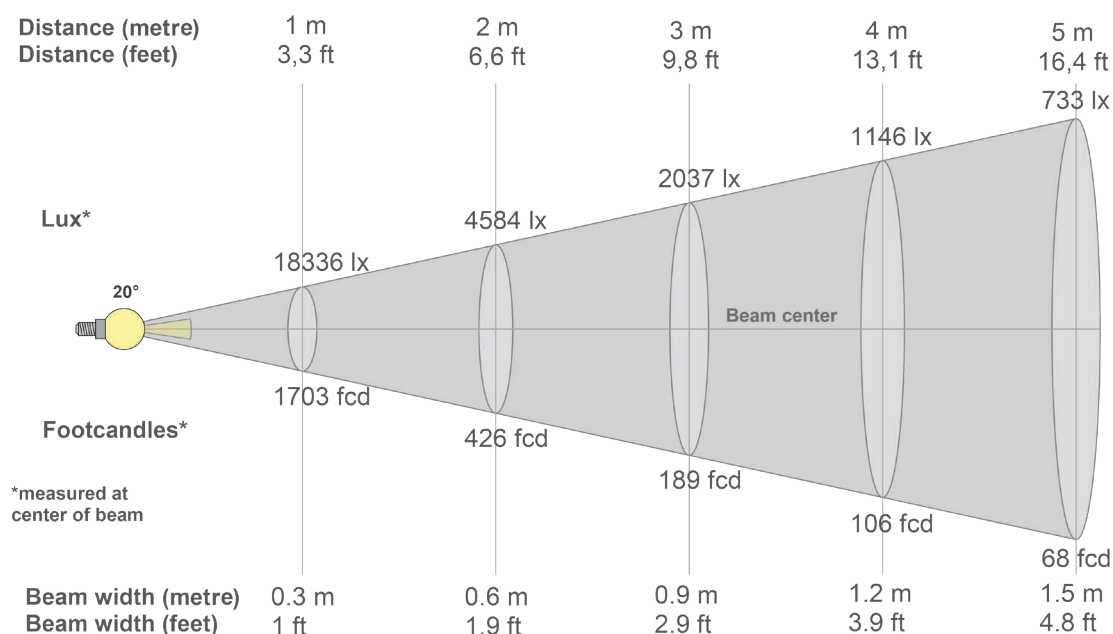
Beam angle 50%	Field angle 10%	Cutoff angle 2,5%	Intensity ratio in 120° cone	Intensity ratio in 90° cone
10.6°	18.4°	30°	98.8%	97.7%

PULSAR

1 Pembroke Avenue, Waterbeach, Cambridge, CB25 9QP
www.pulsarlight.com | sales@pulsarlight.com | +44 (0) 1223 403 500

LuxEOS Flood 9 - RGBW (5700K)

Intensities at Distance with 20° Optics



Beam intensities from 1-20m

1m	2m	3m	4m	5m	6m	7m	8m	9m	10m	11m	12m	13m	14m	15m	16m	17m	18m	19m	20m
3.3ft	6.6ft	9.8ft	13.1ft	16.4ft	19.7ft	23ft	26.2ft	29.5ft	32.8ft	36.1ft	39.4ft	42.7ft	45.9ft	49.2ft	52.5ft	55.8ft	59.1ft	62.3ft	65.6ft
18336lx	4584lx	2037lx	1146lx	733lx	509lx	374lx	287lx	226lx	183lx	152lx	127lx	108lx	94lx	81lx	72lx	63lx	57lx	51lx	46lx
1703.5fc	425.9fc	189.3fc	106.5fc	68.1fc	47.3fc	34.8fc	26.6fc	21fc	17fc	14.1fc	11.8fc	10.1fc	8.7fc	7.6fc	6.7fc	5.9fc	5.3fc	4.7fc	4.3fc

Intensities in 0° c-plane

0°	1°	2°	3°	4°	5°	6°	7°	8°	9°	10°	11°	12°	13°	14°	15°	16°	17°	18°	19°
18.3K	18.2K	17.6K	16.8K	15.6K	14.2K	12.8K	11.2K	9.7K	8.3K	7.0K	5.8K	4.8K	3.9K	3.1K	2.5K	2.1K	1.7K	1.3K	1.1K
100%	99%	96%	91%	85%	78%	70%	61%	53%	45%	38%	32%	26%	21%	17%	14%	11%	9%	7%	6%

Intensities in 90° c-plane

0°	1°	2°	3°	4°	5°	6°	7°	8°	9°	10°	11°	12°	13°	14°	15°	16°	17°	18°	19°
18.3K	18.2K	17.6K	16.8K	15.6K	14.2K	12.8K	11.2K	9.7K	8.3K	7.0K	5.8K	4.8K	3.9K	3.1K	2.5K	2.1K	1.7K	1.3K	1.1K
100%	99%	96%	91%	85%	78%	70%	61%	53%	45%	38%	32%	26%	21%	17%	14%	11%	9%	7%	6%

Intensities in 180° c-plane

0°	1°	2°	3°	4°	5°	6°	7°	8°	9°	10°	11°	12°	13°	14°	15°	16°	17°	18°	19°
18.3K	18.2K	17.6K	16.8K	15.6K	14.2K	12.8K	11.2K	9.7K	8.3K	7.0K	5.8K	4.8K	3.9K	3.1K	2.5K	2.1K	1.7K	1.3K	1.1K
100%	99%	96%	91%	85%	78%	70%	61%	53%	45%	38%	32%	26%	21%	17%	14%	11%	9%	7%	6%

Intensities in 270° c-plane

0°	1°	2°	3°	4°	5°	6°	7°	8°	9°	10°	11°	12°	13°	14°	15°	16°	17°	18°	19°
18.3K	18.2K	17.6K	16.8K	15.6K	14.2K	12.8K	11.2K	9.7K	8.3K	7.0K	5.8K	4.8K	3.9K	3.1K	2.5K	2.1K	1.7K	1.3K	1.1K
100%	99%	96%	91%	85%	78%	70%	61%	53%	45%	38%	32%	26%	21%	17%	14%	11%	9%	7%	6%

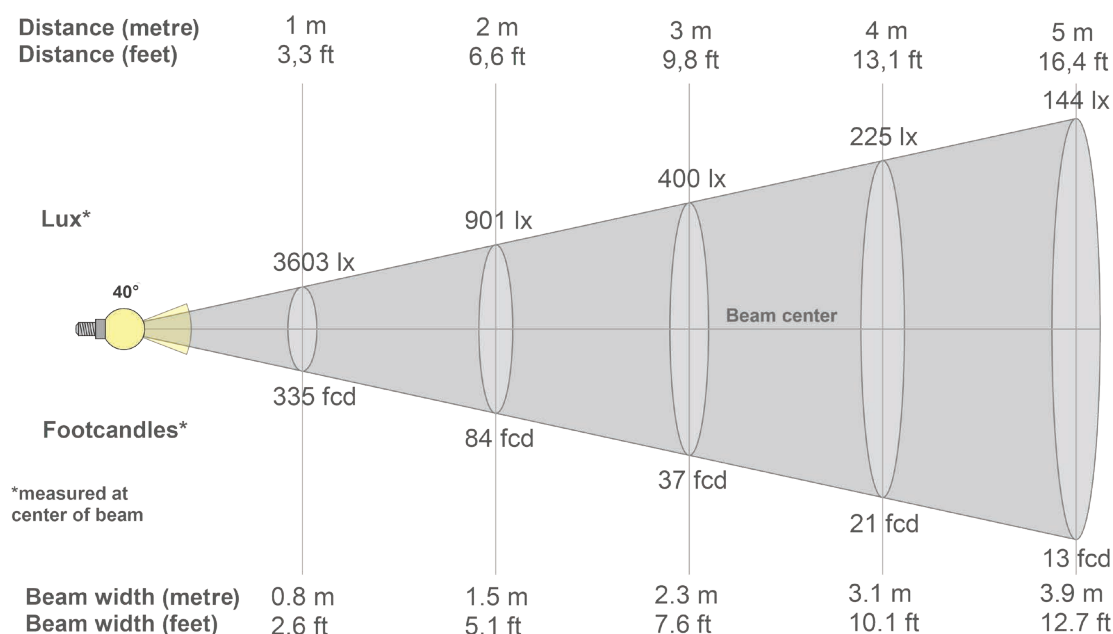
Beam angle 50%	Field angle 10%	Cutoff angle 2,5%	Intensity ratio in 120° cone	Intensity ratio in 90° cone
16.8°	33.1°	47.6°	97.0%	94.9%

PULSAR

1 Pembroke Avenue, Waterbeach, Cambridge, CB25 9QP
www.pulsarlight.com | sales@pulsarlight.com | +44 (0) 1223 403 500

LuxEOS Flood 9 - RGBW (5700K)

Intensities at Distance with 40° Optics



Beam intensities from 1-20m

1m	2m	3m	4m	5m	6m	7m	8m	9m	10m	11m	12m	13m	14m	15m	16m	17m	18m	19m	20m
3.3ft	6.6ft	9.8ft	13.1ft	16.4ft	19.7ft	23ft	26.2ft	29.5ft	32.8ft	36.1ft	39.4ft	42.7ft	45.9ft	49.2ft	52.5ft	55.8ft	59.1ft	62.3ft	65.6ft
3603lx	901lx	400lx	225lx	144lx	100lx	74lx	56lx	44lx	36lx	30lx	25lx	21lx	18lx	16lx	14lx	12lx	11lx	10lx	9lx
334.8fcd	83.7fcd	37.2fcd	20.9fcd	13.4fcd	9.3fcd	6.8fcd	5.2fcd	4.1fcd	3.3fcd	2.8fcd	2.3fcd	2fcd	1.7fcd	1.5fcd	1.3fcd	1.2fcd	1fcd	0.9fcd	0.8fcd

Intensities in 0° c-plane

0°	2°	4°	6°	8°	10°	12°	14°	16°	18°	20°	22°	24°	26°	28°	30°	32°	34°	36°	38°
3603	3589	3540	3458	3341	3188	2999	2776	2524	2250	1965	1682	1416	1176	970	799	658	543	449	371
100%	100%	98%	96%	93%	88%	83%	77%	70%	62%	55%	47%	39%	33%	27%	22%	18%	15%	12%	10%

Intensities in 90° c-plane

0°	2°	4°	6°	8°	10°	12°	14°	16°	18°	20°	22°	24°	26°	28°	30°	32°	34°	36°	38°
3603	3589	3540	3458	3341	3188	2999	2776	2524	2250	1965	1682	1416	1176	970	799	658	543	449	371
100%	100%	98%	96%	93%	88%	83%	77%	70%	62%	55%	47%	39%	33%	27%	22%	18%	15%	12%	10%

Intensities in 180° c-plane

0°	2°	4°	6°	8°	10°	12°	14°	16°	18°	20°	22°	24°	26°	28°	30°	32°	34°	36°	38°
3603	3589	3540	3458	3341	3188	2999	2776	2524	2250	1965	1682	1416	1176	970	799	658	543	449	371
100%	100%	98%	96%	93%	88%	83%	77%	70%	62%	55%	47%	39%	33%	27%	22%	18%	15%	12%	10%

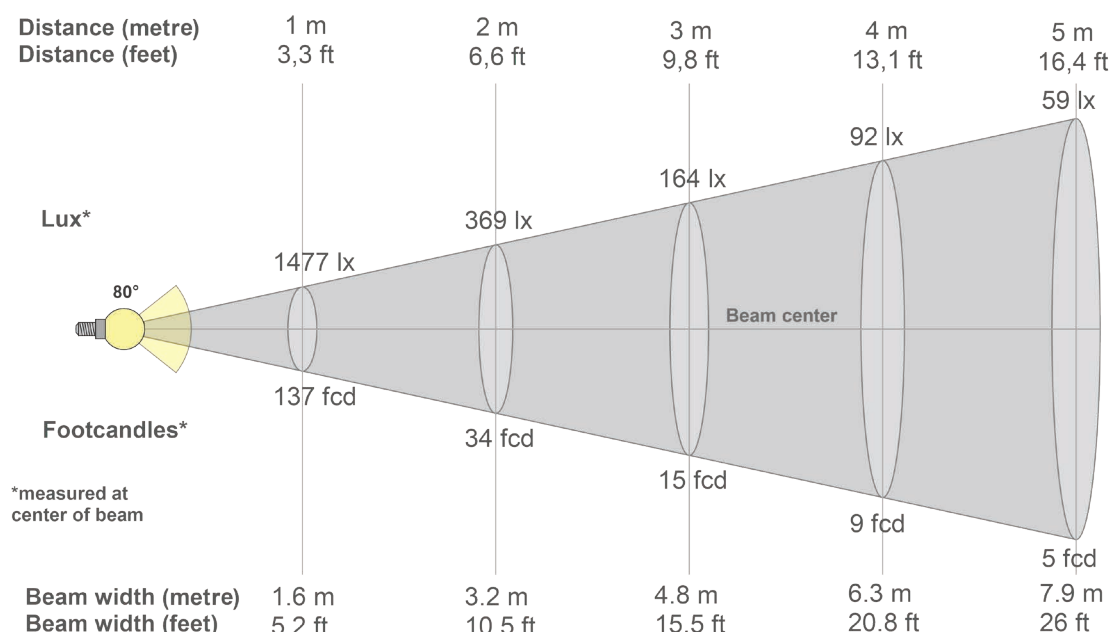
Intensities in 270° c-plane

0°	2°	4°	6°	8°	10°	12°	14°	16°	18°	20°	22°	24°	26°	28°	30°	32°	34°	36°	38°
3603	3589	3540	3458	3341	3188	2999	2776	2524	2250	1965	1682	1416	1176	970	799	658	543	449	371
100%	100%	98%	96%	93%	88%	83%	77%	70%	62%	55%	47%	39%	33%	27%	22%	18%	15%	12%	10%

Beam angle 50%	Field angle 10%	Cutoff angle 2.5%	Intensity ratio in 120° cone	Intensity ratio in 90° cone
42.3°	76.6°	105.5°	96.7%	90.9%

LuxEOS Flood 9 - RGBW (5700K)

Intensities at Distance with 80° Optics



Beam intensities from 1-20m

1m	2m	3m	4m	5m	6m	7m	8m	9m	10m	11m	12m	13m	14m	15m	16m	17m	18m	19m	20m
3.3ft	6.6ft	9.8ft	13.1ft	16.4ft	19.7ft	23ft	26.2ft	29.5ft	32.8ft	36.1ft	39.4ft	42.7ft	45.9ft	49.2ft	52.5ft	55.8ft	59.1ft	62.3ft	65.6ft
1477lx	369lx	164lx	92lx	59lx	41lx	30lx	23lx	18lx	15lx	12lx	10lx	9lx	8lx	7lx	6lx	5lx	5lx	4lx	4lx
137.2fcd	34.3fcd	15.2fcd	8.6fcd	5.5fcd	3.8fcd	2.8fcd	2.1fcd	1.7fcd	1.4fcd	1.1fcd	1fcd	0.8fcd	0.7fcd	0.6fcd	0.5fcd	0.5fcd	0.4fcd	0.4fcd	0.3fcd

Intensities in 0° c-plane

0°	5°	10°	15°	20°	25°	30°	35°	40°	45°	50°	55°	60°	65°	70°	75°	80°	85°	90°	95°
1477	1428	1361	1346	1332	1269	1126	904	662	442	266	154	92	58	38	23	11	3	1	0
100%	97%	92%	91%	90%	86%	76%	61%	45%	30%	18%	10%	6%	4%	3%	2%	1%	0%	0%	0%

Intensities in 90° c-plane

0°	5°	10°	15°	20°	25°	30°	35°	40°	45°	50°	55°	60°	65°	70°	75°	80°	85°	90°	95°
1477	1428	1361	1346	1332	1269	1126	904	662	442	266	154	92	58	38	23	11	3	1	0
100%	97%	92%	91%	90%	86%	76%	61%	45%	30%	18%	10%	6%	4%	3%	2%	1%	0%	0%	0%

Intensities in 180° c-plane

0°	5°	10°	15°	20°	25°	30°	35°	40°	45°	50°	55°	60°	65°	70°	75°	80°	85°	90°	95°
1477	1428	1361	1346	1332	1269	1126	904	662	442	266	154	92	58	38	23	11	3	1	0
100%	97%	92%	91%	90%	86%	76%	61%	45%	30%	18%	10%	6%	4%	3%	2%	1%	0%	0%	0%

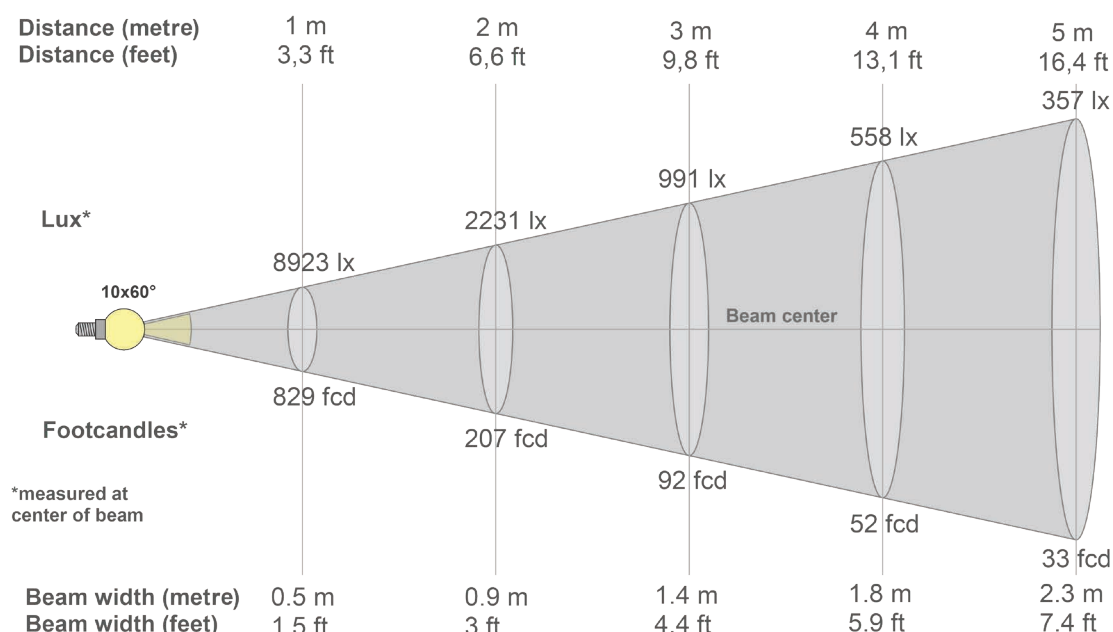
Intensities in 270° c-plane

0°	5°	10°	15°	20°	25°	30°	35°	40°	45°	50°	55°	60°	65°	70°	75°	80°	85°	90°	95°
1477	1428	1361	1346	1332	1269	1126	904	662	442	266	154	92	58	38	23	11	3	1	0
100%	97%	92%	91%	90%	86%	76%	61%	45%	30%	18%	10%	6%	4%	3%	2%	1%	0%	0%	0%

Beam angle 50%	Field angle 10%	Cutoff angle 2,5%	Intensity ratio in 120° cone	Intensity ratio in 90° cone
76.8°	110.8°	140.5°	95.0%	82.4%

LuxEOS Flood 9 - RGBW (5700K)

Intensities at Distance with 10x60° & 60x10° Optics



Beam intensities from 1-20m

1m	2m	3m	4m	5m	6m	7m	8m	9m	10m	11m	12m	13m	14m	15m	16m	17m	18m	19m	20m
3.3ft	6.6ft	9.8ft	13.1ft	16.4ft	19.7ft	23ft	26.2ft	29.5ft	32.8ft	36.1ft	39.4ft	42.7ft	45.9ft	49.2ft	52.5ft	55.8ft	59.1ft	62.3ft	65.6ft
8923lx	2231lx	991lx	558lx	357lx	248lx	182lx	139lx	110lx	89lx	74lx	62lx	53lx	46lx	40lx	35lx	31lx	28lx	25lx	22lx
828.9fcd	207.2fcd	92.1fcd	51.8fcd	33.2fcd	23fcd	16.9fcd	13fcd	10.2fcd	8.3fcd	6.9fcd	5.8fcd	4.9fcd	4.2fcd	3.7fcd	3.2fcd	2.9fcd	2.6fcd	2.3fcd	2.1fcd

Intensities in 0° c-plane

0°	2°	4°	6°	8°	10°	12°	14°	16°	18°	20°	22°	24°	26°	28°	30°	32°	34°	36°	38°
8923	8368	8304	8205	8084	7945	7783	7589	7344	7029	6635	6149	5572	4928	4258	3590	2954	2367	1848	1408
100%	94%	93%	92%	91%	89%	87%	85%	82%	79%	74%	69%	62%	55%	48%	40%	33%	27%	21%	16%

Intensities in 90° c-plane

0°	2°	4°	6°	8°	10°	12°	14°	16°	18°	20°	22°	24°	26°	28°	30°	32°	34°	36°	38°
8923	8824	6537	3933	2123	1247	847	602	424	303	226	176	141	114	95	81	69	61	54	47
100%	99%	73%	44%	24%	14%	9%	7%	5%	3%	3%	2%	2%	1%	1%	1%	1%	1%	1%	1%

Intensities in 180° c-plane

0°	2°	4°	6°	8°	10°	12°	14°	16°	18°	20°	22°	24°	26°	28°	30°	32°	34°	36°	38°
8923	8368	8304	8205	8084	7945	7783	7589	7344	7029	6635	6149	5572	4928	4258	3590	2954	2367	1848	1408
100%	94%	93%	92%	91%	89%	87%	85%	82%	79%	74%	69%	62%	55%	48%	40%	33%	27%	21%	16%

Intensities in 270° c-plane

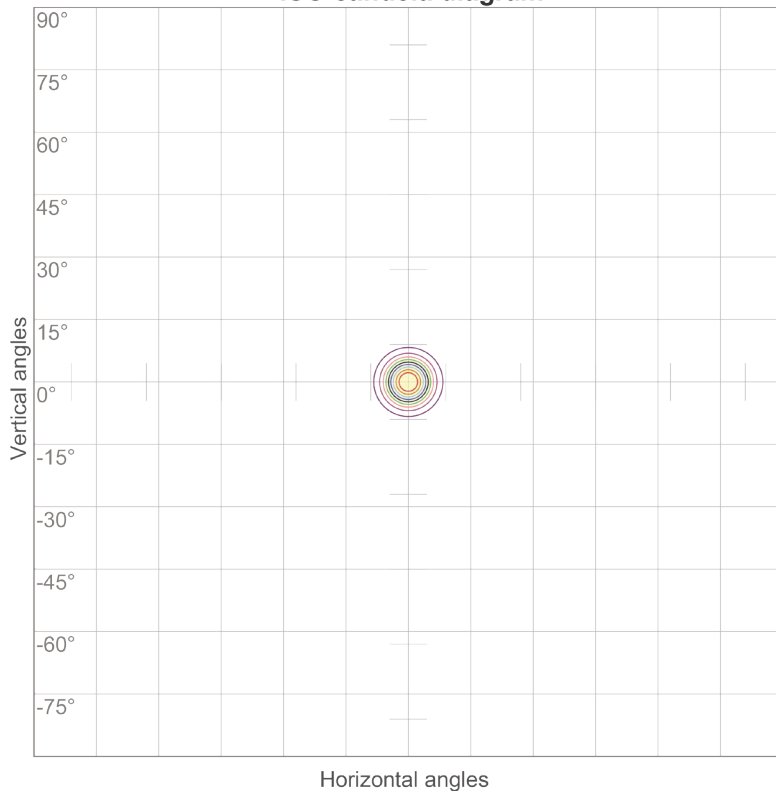
0°	2°	4°	6°	8°	10°	12°	14°	16°	18°	20°	22°	24°	26°	28°	30°	32°	34°	36°	38°
8923	8824	6537	3933	2123	1247	847	602	424	303	226	176	141	114	95	81	69	61	54	47
100%	99%	73%	44%	24%	14%	9%	7%	5%	3%	3%	2%	2%	1%	1%	1%	1%	1%	1%	1%

Beam angle 50%	Field angle 10%	Cutoff angle 2,5%	Intensity ratio in 120° cone	Intensity ratio in 90° cone
25.5°	45.7°	66.1°	97.5%	94.0%

LuxEOS Flood 9 - RGBW (5700K) ISO Candela & ISO Lux diagrams with 10° Optics



ISO candela diagram



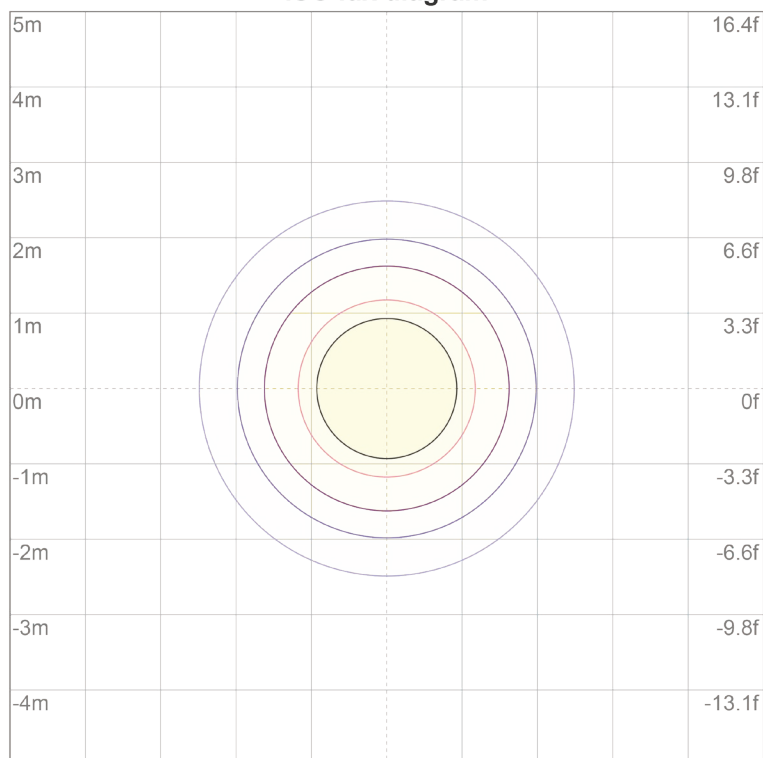
10%	5260 cd
20%	10519 cd
30%	15779 cd
40%	21038 cd
50%	26298 cd
60%	31557 cd
70%	36817 cd
80%	42076 cd
90%	47336 cd

Conditions:

Number of c-planes: 72

Candela at center: 52595 cd

ISO lux diagram



3%	15.8 lx
5%	26.3 lx
10%	52.6 lx
30%	158 lx
50%	263 lx

Conditions:

Number of c-planes: 72

Lux at center: 526 lx

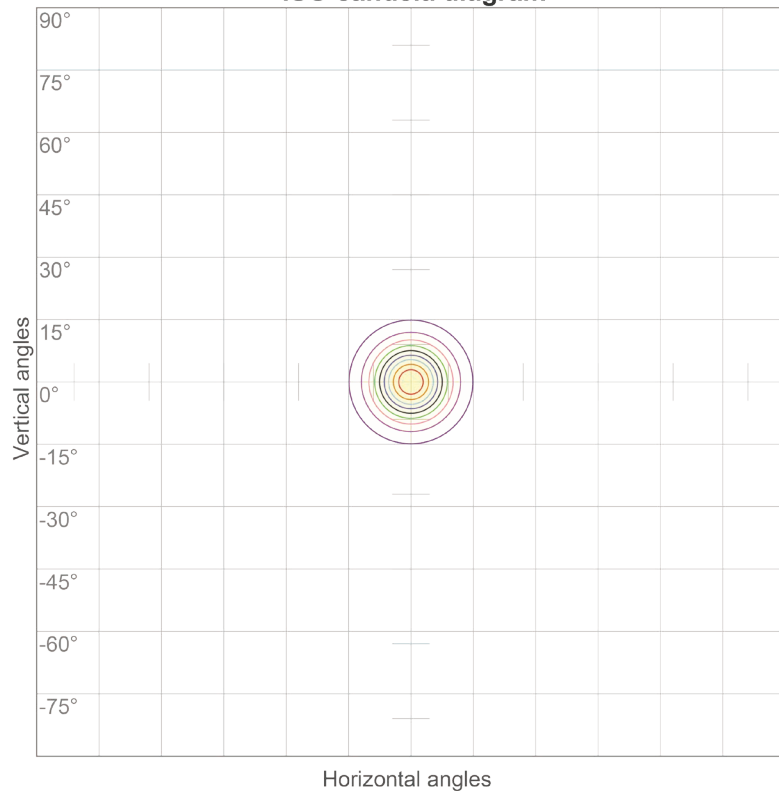
*Lux distribution on a surface
when lamp is mounted at 10
meters from the surface.*

LuxEOS Flood 9 - RGBW (5700K)

ISO Candela & ISO Lux diagrams with 20° Optics



ISO candela diagram



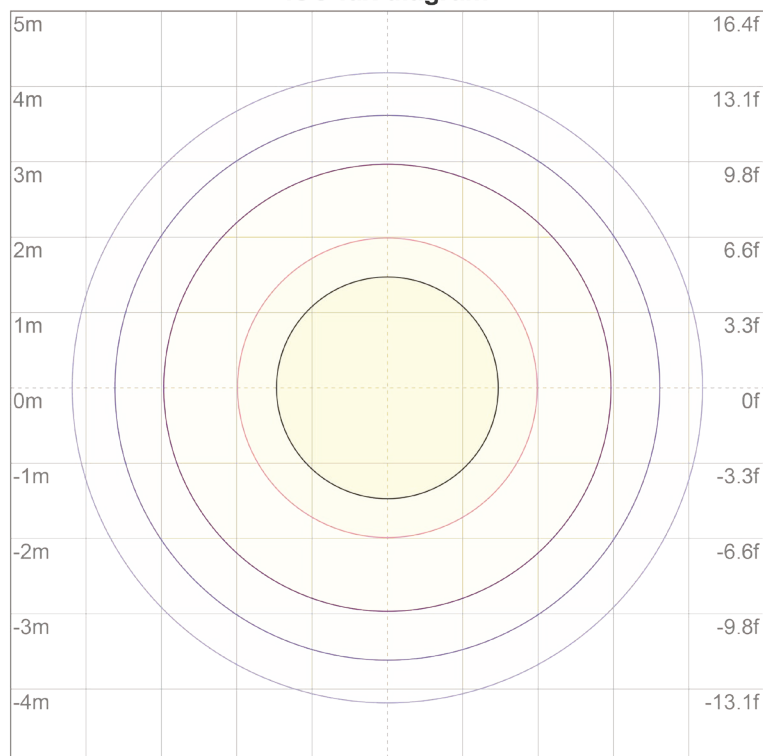
10%	1834 cd
20%	3667 cd
30%	5501 cd
40%	7334 cd
50%	9168 cd
60%	11002 cd
70%	12835 cd
80%	14669 cd
90%	16502 cd

Conditions:

Number of c-planes: 72

Candela at center: 18336 cd

ISO lux diagram



3%	5.50 lx
5%	9.17 lx
10%	18.3 lx
30%	55.0 lx
50%	91.7 lx

Conditions:

Number of c-planes: 72

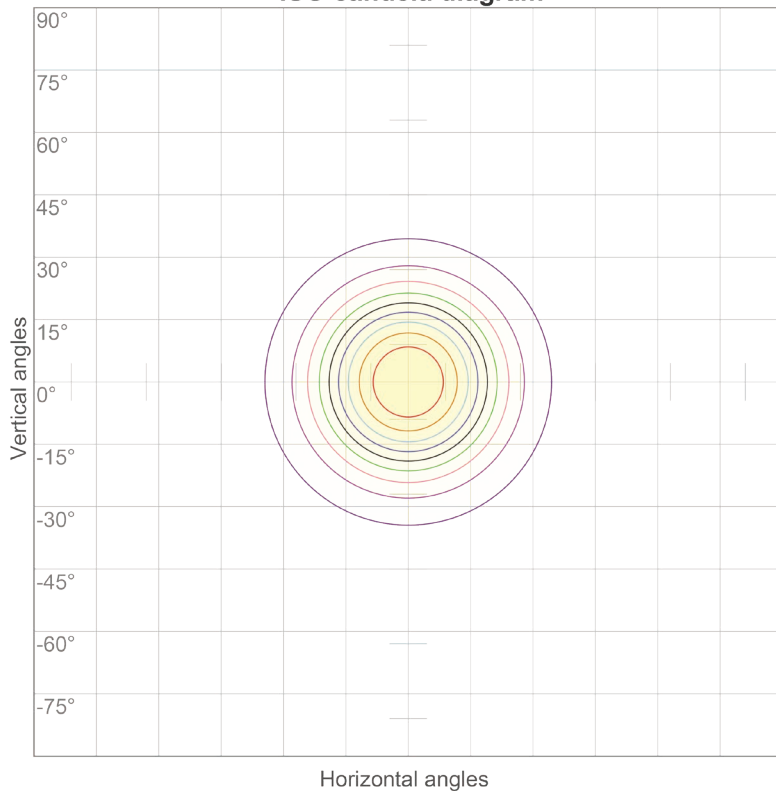
Lux at center: 183 lx

*Lux distribution on a surface
when lamp is mounted at 10
meters from the surface.*

LuxEOS Flood 9 - RGBW (5700K) ISO Candela & ISO Lux diagrams with 40° Optics



ISO candela diagram



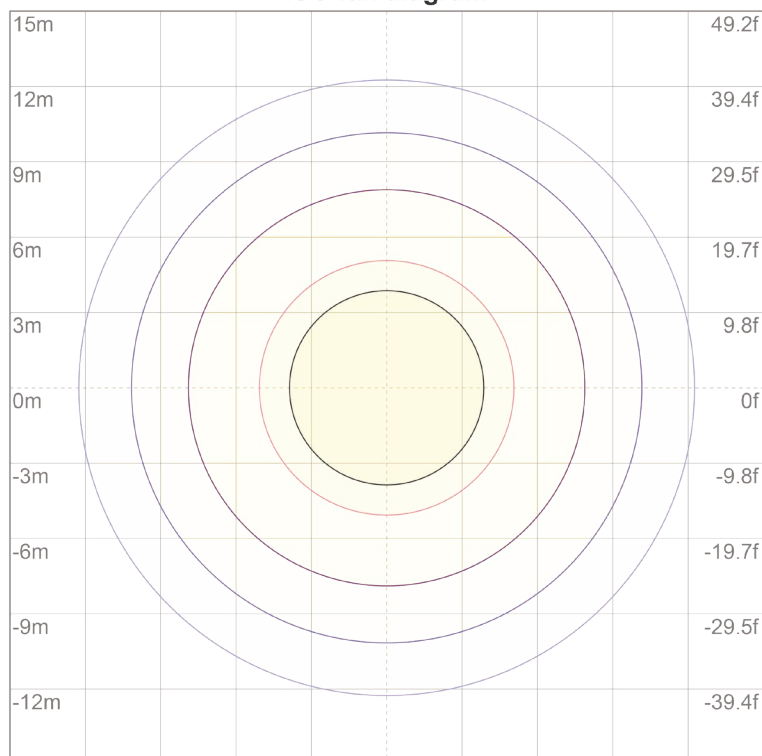
10%	360 cd
20%	721 cd
30%	1081 cd
40%	1441 cd
50%	1802 cd
60%	2162 cd
70%	2522 cd
80%	2883 cd
90%	3243 cd

Conditions:

Number of c-planes: 72

Candela at center: 3603 cd

ISO lux diagram



3%	1.08 lx
5%	1.80 lx
10%	3.60 lx
30%	10.8 lx
50%	18.0 lx

Conditions:

Number of c-planes: 72

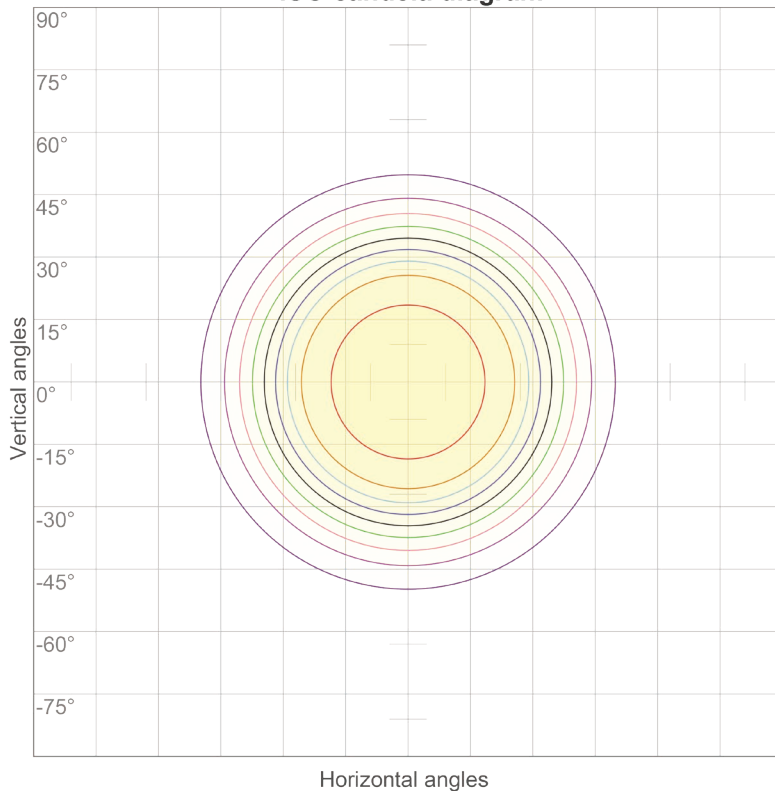
Lux at center: 36.0 lx

*Lux distribution on a surface
when lamp is mounted at 10
meters from the surface.*

LuxEOS Flood 9 - RGBW (5700K) ISO Candela & ISO Lux diagrams with 80° Optics



ISO candela diagram



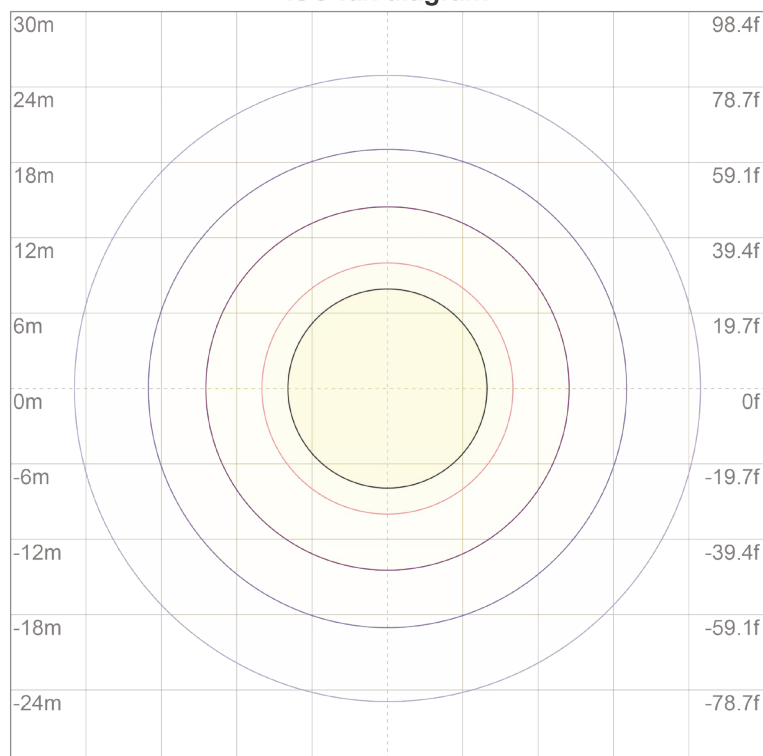
10%	148 cd
20%	295 cd
30%	443 cd
40%	591 cd
50%	738 cd
60%	886 cd
70%	1034 cd
80%	1181 cd
90%	1329 cd

Conditions:

Number of c-planes: 72

Candela at center: 1477 cd

ISO lux diagram



3%	0.443 lx
5%	0.738 lx
10%	1.48 lx
30%	4.43 lx
50%	7.38 lx

Conditions:

Number of c-planes: 72

Lux at center: 14.8 lx

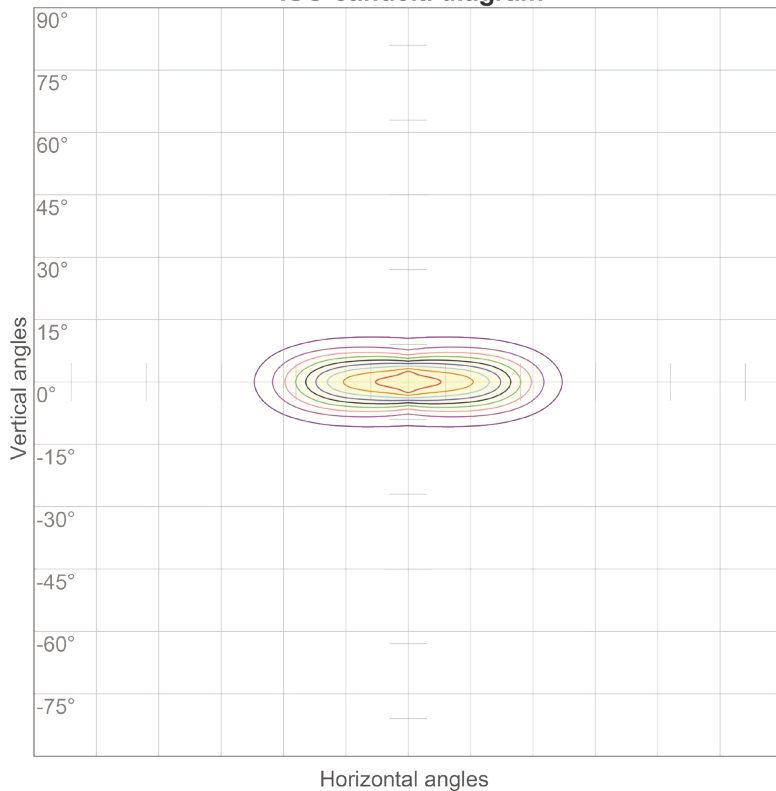
*Lux distribution on a surface
when lamp is mounted at 10
meters from the surface.*

LuxEOS Flood 9 - RGBW (5700K)

ISO Candela & ISO Lux diagrams with 10x60° & 60x10° Optics



ISO candela diagram



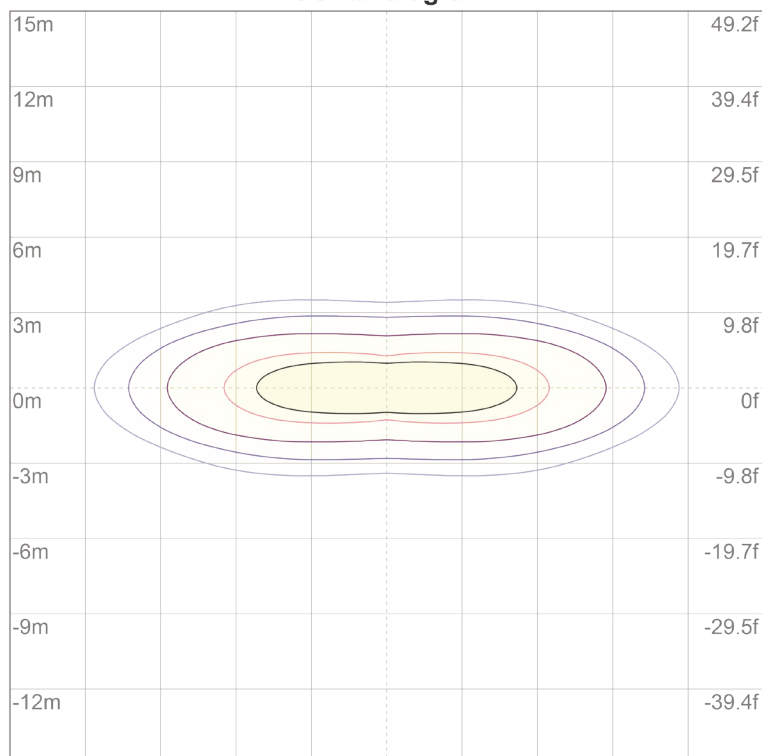
10%	892 cd
20%	1785 cd
30%	2677 cd
40%	3569 cd
50%	4461 cd
60%	5354 cd
70%	6246 cd
80%	7138 cd
90%	8030 cd

Conditions:

Number of c-planes: 72

Candela at center: 8923 cd

ISO lux diagram



3%	2.68 lx
5%	4.46 lx
10%	8.92 lx
30%	26.8 lx
50%	44.6 lx

Conditions:

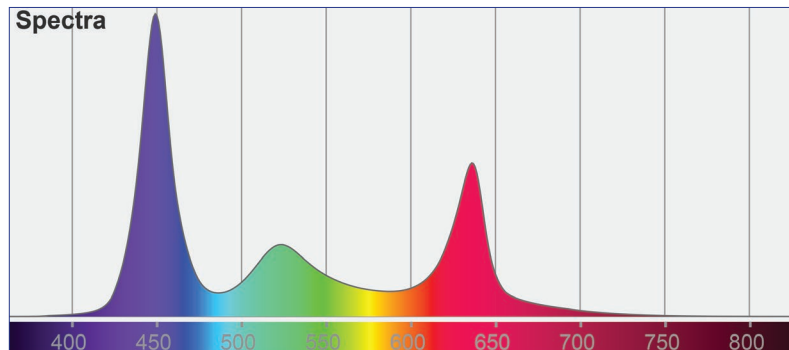
Number of c-planes: 72

Lux at center: 89.2 lx

*Lux distribution on a surface
when lamp is mounted at 10
meters from the surface.*

LuxEOS Flood 9 - RGBW (5700K)

Colormetrics **RGBW**



Total Lumen Output (Native) : 2389 lm

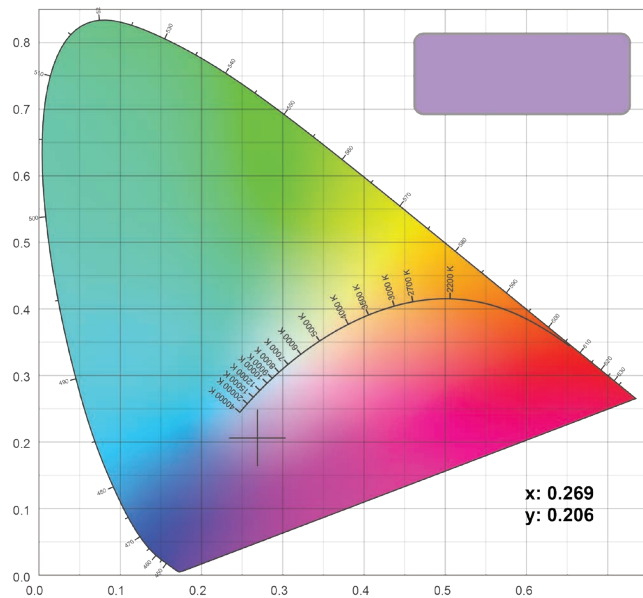
Efficacy : 39.81 lm/W

Voltage : 240V

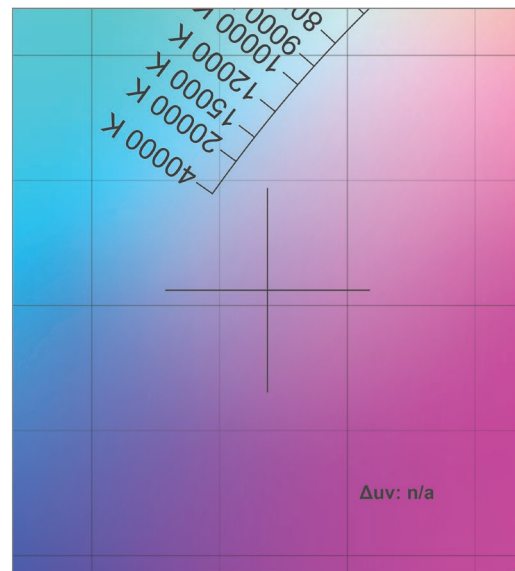
Supply Power : 60W

Supply Power Factor : 0.97

CIE 1931

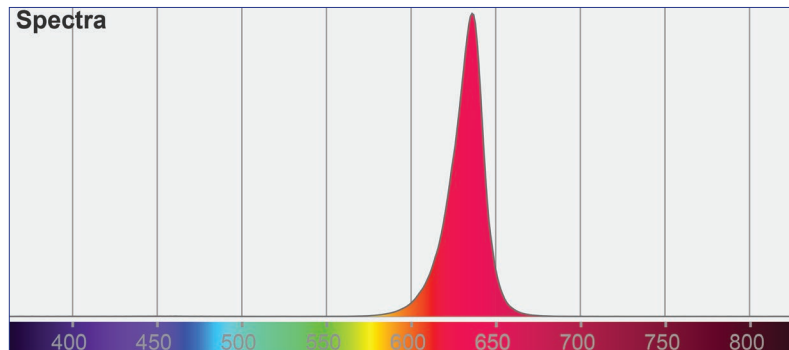


CIE 1931 Zoom



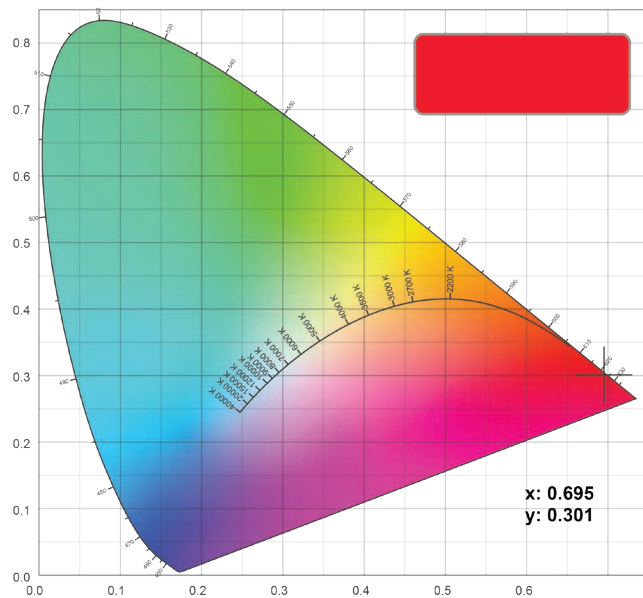
LuxEOS Flood 9 - RGBW (5700K)

Colormetrics **RED**

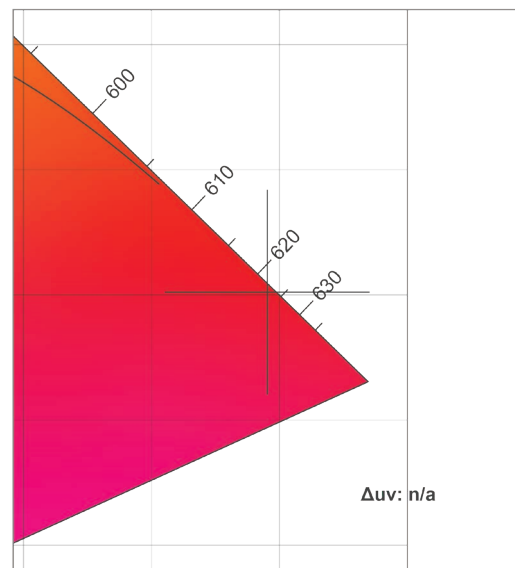


Red Lumen Output : 527 lm

CIE 1931

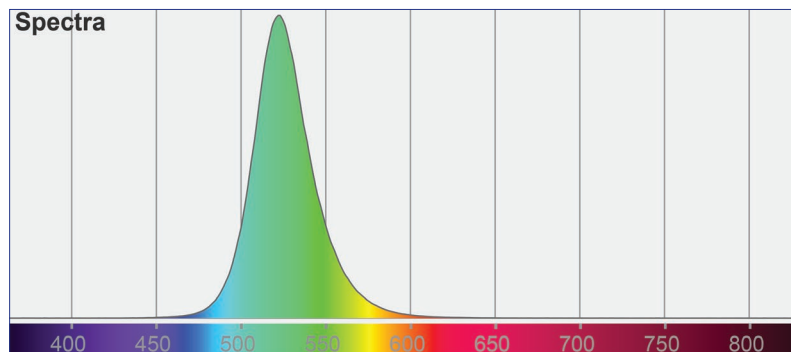


CIE 1931 Zoom



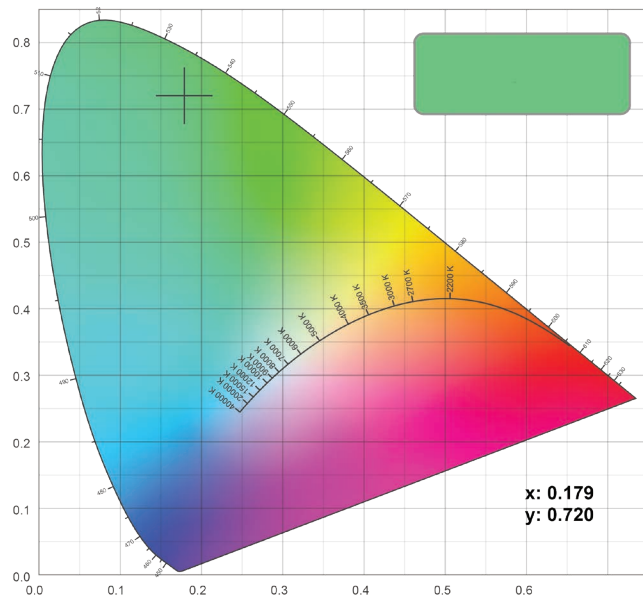
LuxEOS Flood 9 - RGBW (5700K)

Colormetrics **GREEN**

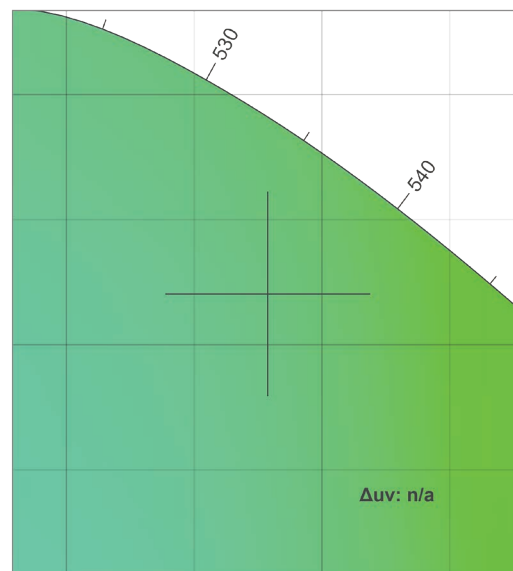


Green Lumen Output : 809 lm

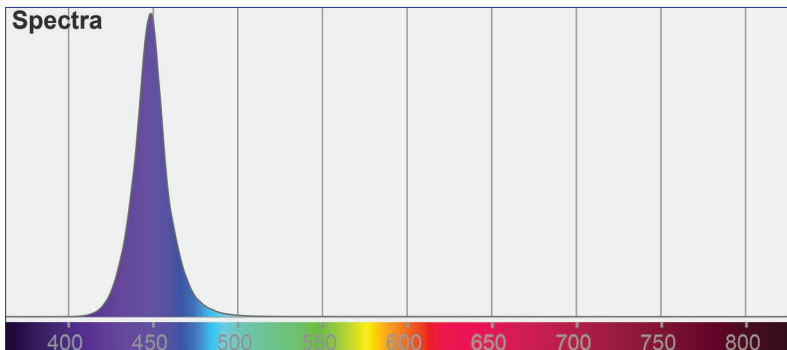
CIE 1931



CIE 1931 Zoom

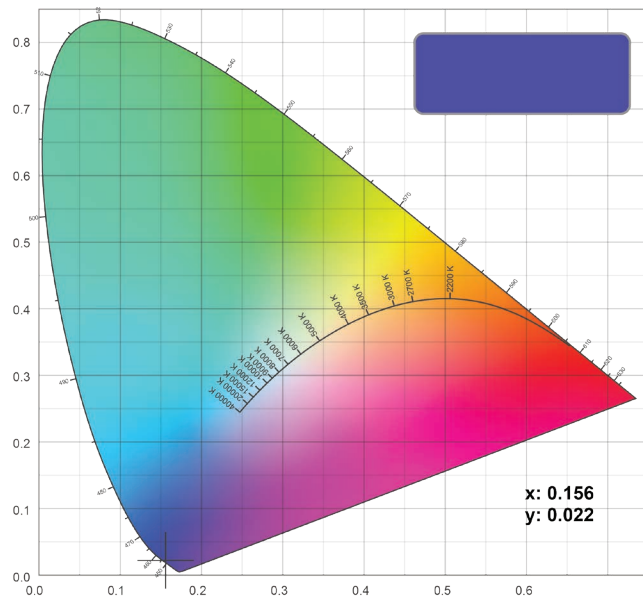


LuxEOS Flood 9 - RGBW (5700K) Colormetrics **BLUE**

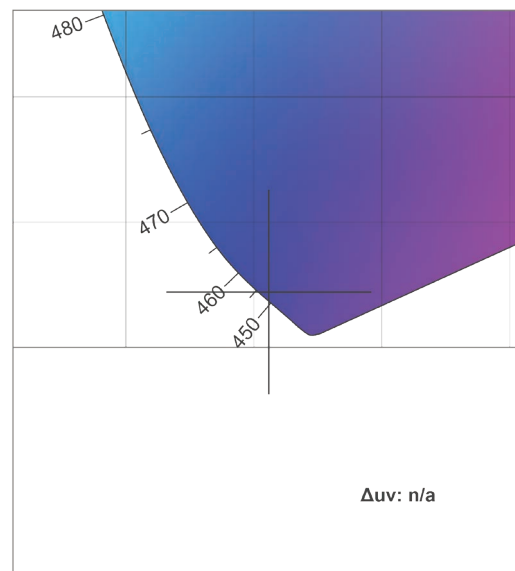


Blue Lumen Output : 178 lm

CIE 1931

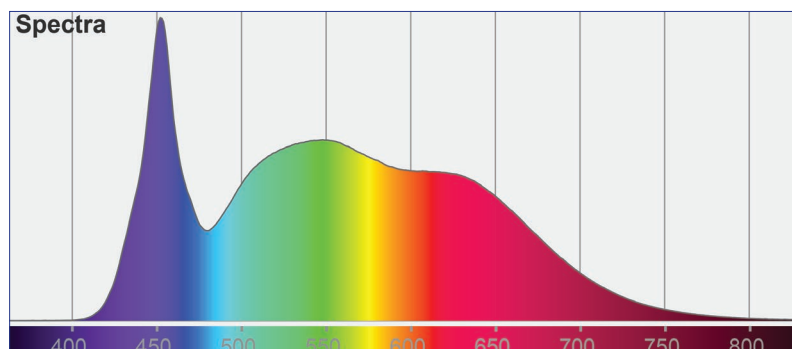


CIE 1931 Zoom



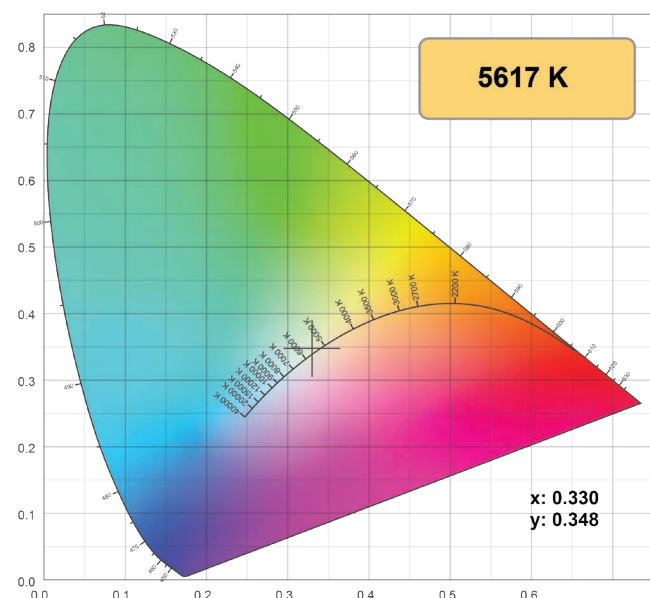
LuxEOS Flood 9 - RGBW (5700K)

Colormetrics **WHITE 5700K**

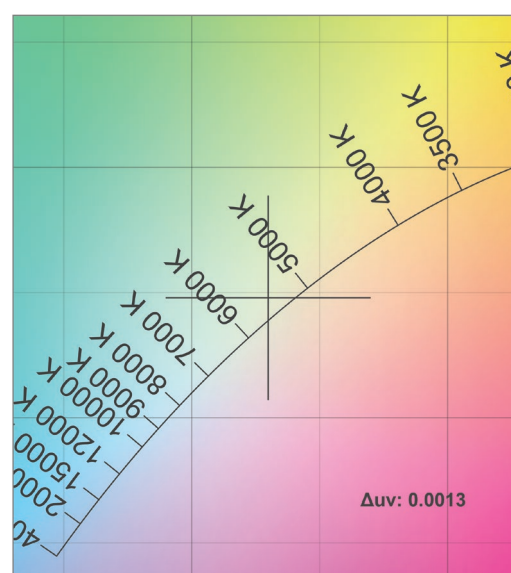


White 5700K Lumen Output : 1451 lm
CRI: 90

CIE 1931



CIE 1931 Zoom



Should further photometric variations be required, please contact our Head Office.

As part our commitment to continuous improvement PULSAR may change the specifications of its products without prior notification or public announcement.

All descriptions, illustrations, drawings and specifications in this publication present only general particulars and shall not form part of any contract.

PULSAR

1 Pembroke Avenue, Waterbeach, Cambridge, CB25 9QP
www.pulsarlight.com | sales@pulsarlight.com | +44 (0) 1223 403 500