

LuxEOS Beam 20 VIVID COLOUR

ULTRA NARROW LED BEAM FOR ARCHITECTURAL LIGHTING



LuxEOS BEAM 20 TW (1700-5700K) 3° 3x60°

Tested By
DW Windsor Group Laboratory
Hoddesdon
UK

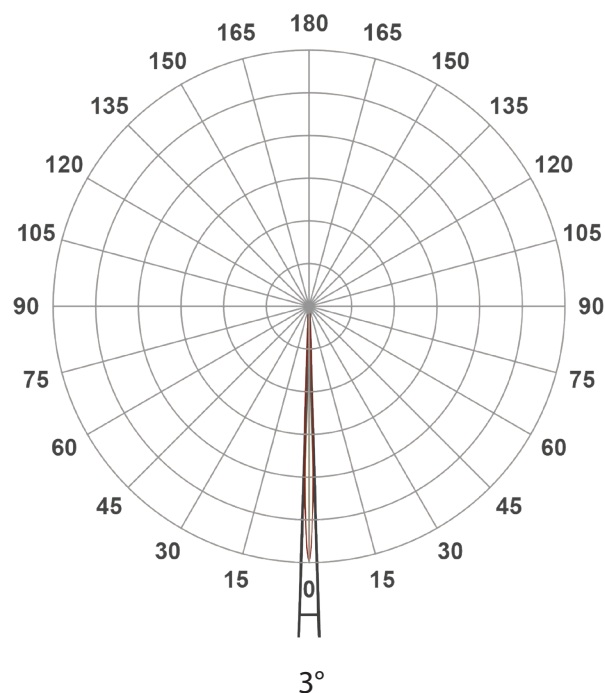
Date
Nov 2020

Dimensions
350mm (H) x 255mm (W) x 150mm (D) (including yoke)

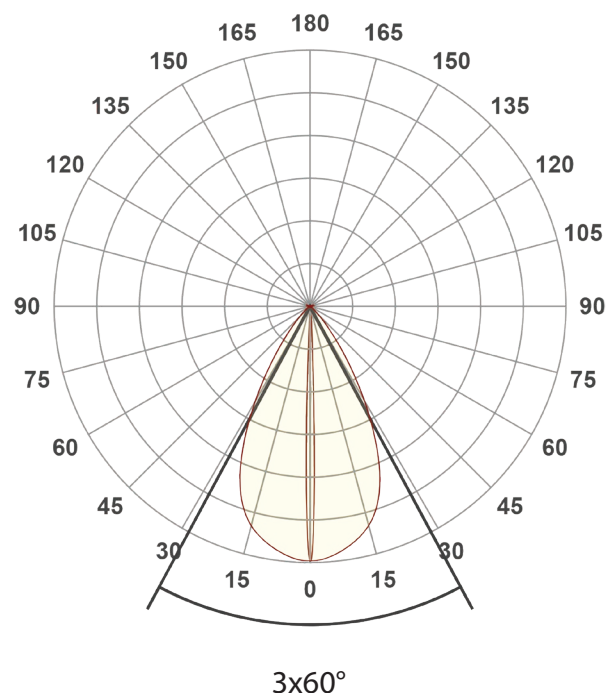
Weight
7.3kgs (16.0lbs)

Polar Distribution

3° Conical Beam (Native)

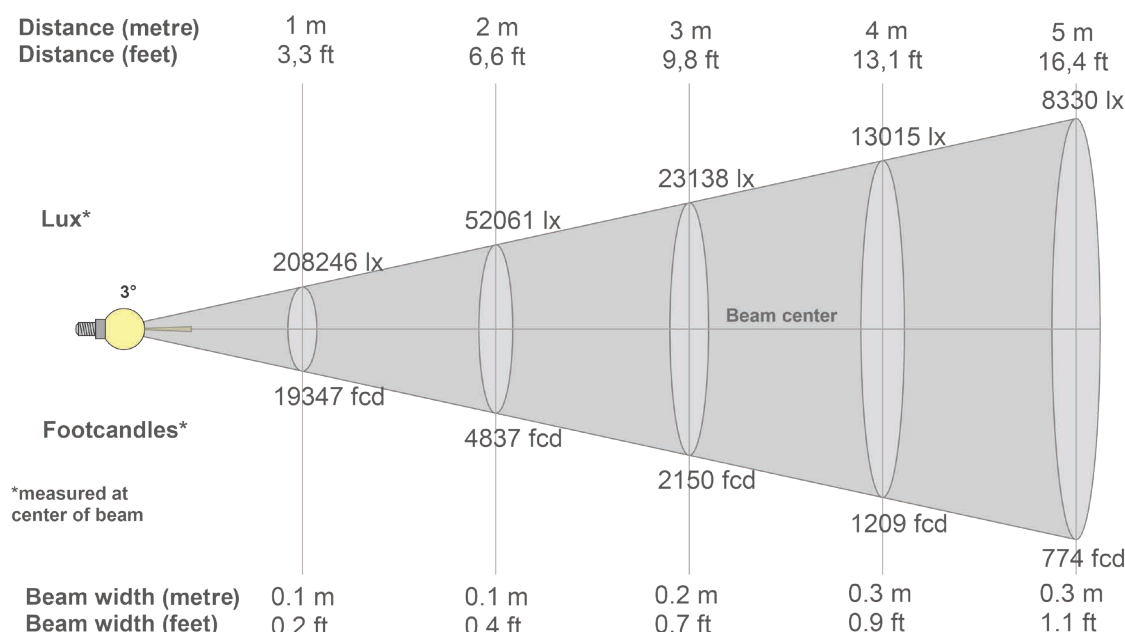


3x60° Elliptical Beam (With HBS)



LuxEOS BEAM 20 - TW (1700-5700K)

Intensities at Distance with native 3° Optics



Beam intensities from 1-20m

1m	2m	3m	4m	5m	6m	7m	8m	9m	10m	11m	12m	13m	14m	15m	16m	17m	18m	19m	20m
3.3ft	6.6ft	9.8ft	13.1ft	16.4ft	19.7ft	23ft	26.2ft	29.5ft	32.8ft	36.1ft	39.4ft	42.7ft	45.9ft	49.2ft	52.5ft	55.8ft	59.1ft	62.3ft	65.6ft
208246lx	52061lx	23138lx	13015lx	8330lx	5785lx	4250lx	3254lx	2571lx	2082lx	1721lx	1446lx	1232lx	1062lx	926lx	813lx	721lx	643lx	577lx	521lx
19346.6fc	4836.7fc	2149.6fc	1209.2fc	773.9fc	537.4fc	394.8fc	302.3fc	238.8fc	193.5fc	159.9fc	134.4fc	114.5fc	98.7fc	86fc	75.6fc	66.9fc	59.7fc	53.6fc	48.4fc

Intensities in 0° c-plane

0°	1°	2°	3°	4°	5°	6°	7°	8°	9°	10°	11°	12°	13°	14°	15°	16°	17°	18°	19°
208K	171K	99K	47K	20K	9K	5K	3K	2K	2K	2K	2K	1K	1K	1K	1K	1K	1K	1K	1K
100%	82%	48%	22%	10%	4%	2%	1%	1%	1%	1%	1%	1%	1%	1%	0%	0%	0%	0%	0%

Intensities in 90° c-plane

0°	1°	2°	3°	4°	5°	6°	7°	8°	9°	10°	11°	12°	13°	14°	15°	16°	17°	18°	19°
208K	171K	99K	47K	20K	9K	5K	3K	2K	2K	2K	2K	1K	1K	1K	1K	1K	1K	1K	1K
100%	82%	48%	22%	10%	4%	2%	1%	1%	1%	1%	1%	1%	1%	1%	0%	0%	0%	0%	0%

Intensities in 180° c-plane

0°	1°	2°	3°	4°	5°	6°	7°	8°	9°	10°	11°	12°	13°	14°	15°	16°	17°	18°	19°
208K	171K	99K	47K	20K	9K	5K	3K	2K	2K	2K	2K	1K	1K	1K	1K	1K	1K	1K	1K
100%	82%	48%	22%	10%	4%	2%	1%	1%	1%	1%	1%	1%	1%	1%	0%	0%	0%	0%	0%

Intensities in 270° c-plane

0°	1°	2°	3°	4°	5°	6°	7°	8°	9°	10°	11°	12°	13°	14°	15°	16°	17°	18°	19°
208K	171K	99K	47K	20K	9K	5K	3K	2K	2K	2K	2K	1K	1K	1K	1K	1K	1K	1K	1K
100%	82%	48%	22%	10%	4%	2%	1%	1%	1%	1%	1%	1%	1%	1%	0%	0%	0%	0%	0%

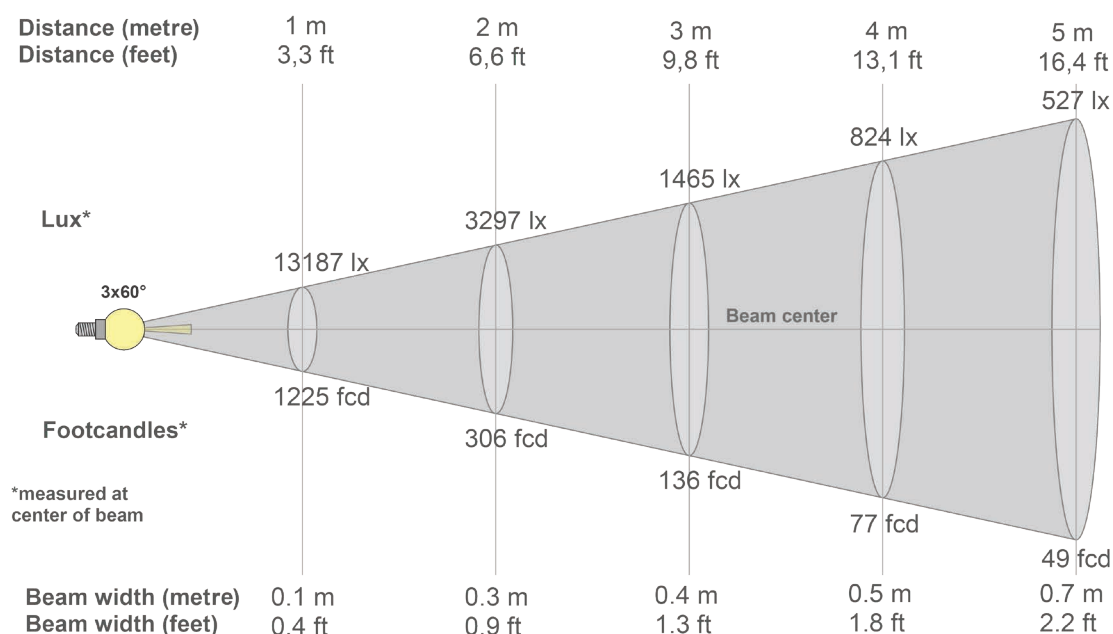
Beam angle 50%	Field angle 10%	Cutoff angle 2,5%	Intensity ratio in 120° cone	Intensity ratio in 90° cone
3.8°	7.9°	11.6°	94.9%	91.6%

PULSAR

1 Pembroke Avenue, Waterbeach, Cambridge, CB25 9QP
www.pulsarlight.com | sales@pulsarlight.com | +44 (0) 1223 403 500

LuxEOS BEAM 20 - TW (1700-5700K

Intensities at Distance with 3x60° Optics



Beam intensities from 1-20m

1m	2m	3m	4m	5m	6m	7m	8m	9m	10m	11m	12m	13m	14m	15m	16m	17m	18m	19m	20m
3.3ft	6.6ft	9.8ft	13.1ft	16.4ft	19.7ft	23ft	26.2ft	29.5ft	32.8ft	36.1ft	39.4ft	42.7ft	45.9ft	49.2ft	52.5ft	55.8ft	59.1ft	62.3ft	65.6ft
13187lx	3297lx	1465lx	824lx	527lx	366lx	269lx	206lx	163lx	132lx	109lx	92lx	78lx	67lx	59lx	52lx	46lx	41lx	37lx	33lx
1225.1fc	306.3fc	136.1fc	76.6fc	49fc	34fc	25fc	19.1fc	15.1fc	12.3fc	10.1fc	8.5fc	7.2fc	6.3fc	5.4fc	4.8fc	4.2fc	3.8fc	3.4fc	3.1fc

Intensities in 0° c-plane

0°	1°	2°	3°	4°	5°	6°	7°	8°	9°	10°	11°	12°	13°	14°	15°	16°	17°	18°	19°
13.2K	11.8K	7.8K	4.2K	2.2K	1.3K	0.9K	0.7K	0.6K	0.5K	0.4K	0.3K	0.3K	0.3K	0.2K	0.2K	0.2K	0.2K	0.2K	0.1K
100%	90%	59%	32%	16%	10%	7%	5%	4%	4%	3%	3%	2%	2%	2%	2%	1%	1%	1%	1%

Intensities in 90° c-plane

0°	1°	2°	3°	4°	5°	6°	7°	8°	9°	10°	11°	12°	13°	14°	15°	16°	17°	18°	19°
13.2K	13.3K	13.2K	13.1K	13.0K	12.9K	12.7K	12.6K	12.4K	12.2K	11.9K	11.7K	11.4K	11.1K	10.7K	10.4K	10.0K	9.6K	9.2K	8.8K
100%	101%	100%	100%	99%	98%	97%	95%	94%	92%	90%	88%	86%	84%	81%	79%	76%	73%	70%	66%

Intensities in 180° c-plane

0°	1°	2°	3°	4°	5°	6°	7°	8°	9°	10°	11°	12°	13°	14°	15°	16°	17°	18°	19°
13.2K	11.8K	7.8K	4.2K	2.2K	1.3K	0.9K	0.7K	0.6K	0.5K	0.4K	0.3K	0.3K	0.3K	0.2K	0.2K	0.2K	0.2K	0.2K	0.1K
100%	90%	59%	32%	16%	10%	7%	5%	4%	4%	3%	3%	2%	2%	2%	2%	1%	1%	1%	1%

Intensities in 270° c-plane

0°	1°	2°	3°	4°	5°	6°	7°	8°	9°	10°	11°	12°	13°	14°	15°	16°	17°	18°	19°
13.2K	13.3K	13.2K	13.1K	13.0K	12.9K	12.7K	12.6K	12.4K	12.2K	11.9K	11.7K	11.4K	11.1K	10.7K	10.4K	10.0K	9.6K	9.2K	8.8K
100%	101%	100%	100%	99%	98%	97%	95%	94%	92%	90%	88%	86%	84%	81%	79%	76%	73%	70%	66%

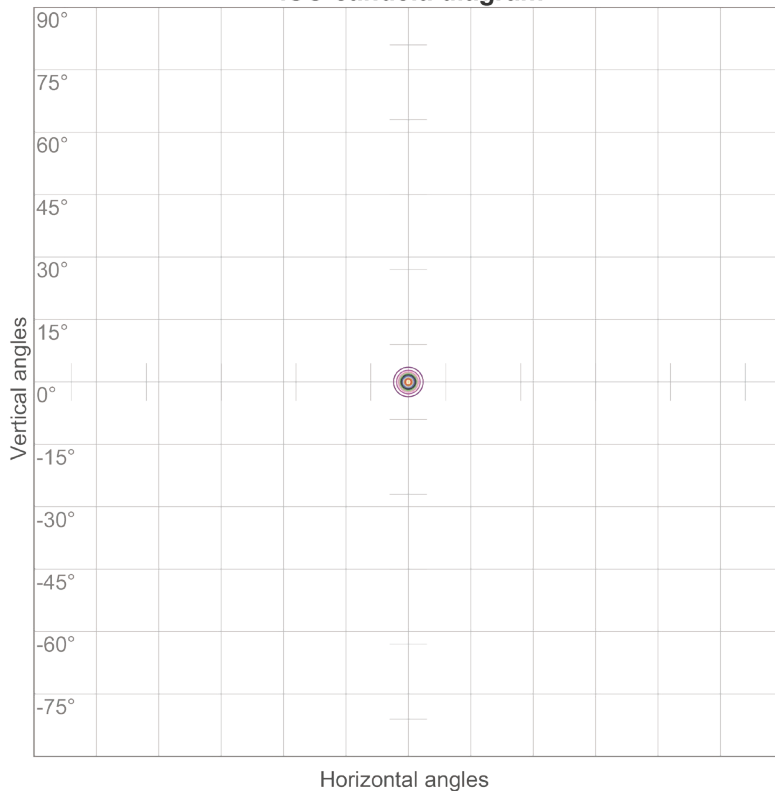
Beam angle 50%	Field angle 10%	Cutoff angle 2,5%	Intensity ratio in 120° cone	Intensity ratio in 90° cone
7.8°	15.1°	28.5°	97.4%	93.7%

PULSAR

1 Pembroke Avenue, Waterbeach, Cambridge, CB25 9QP
www.pulsarlight.com | sales@pulsarlight.com | +44 (0) 1223 403 500



ISO candela diagram



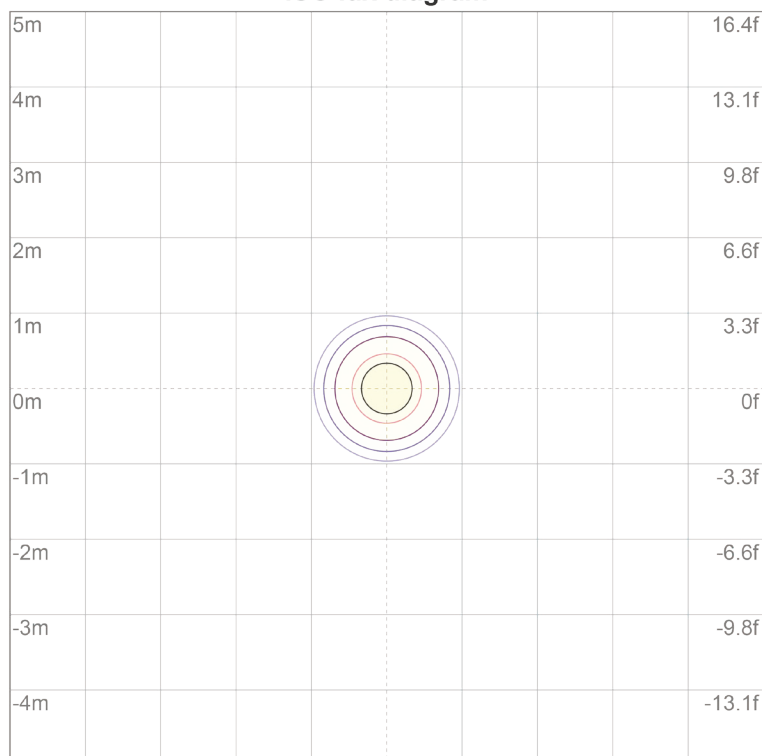
10%	20825 cd
20%	41649 cd
30%	62474 cd
40%	83298 cd
50%	104123 cd
60%	124947 cd
70%	145772 cd
80%	166596 cd
90%	187421 cd

Conditions:

Number of c-planes: 72

Candela at center: 208246 cd

ISO lux diagram



3%	62.5 lx
5%	104 lx
10%	208 lx
30%	625 lx
50%	1041 lx

Conditions:

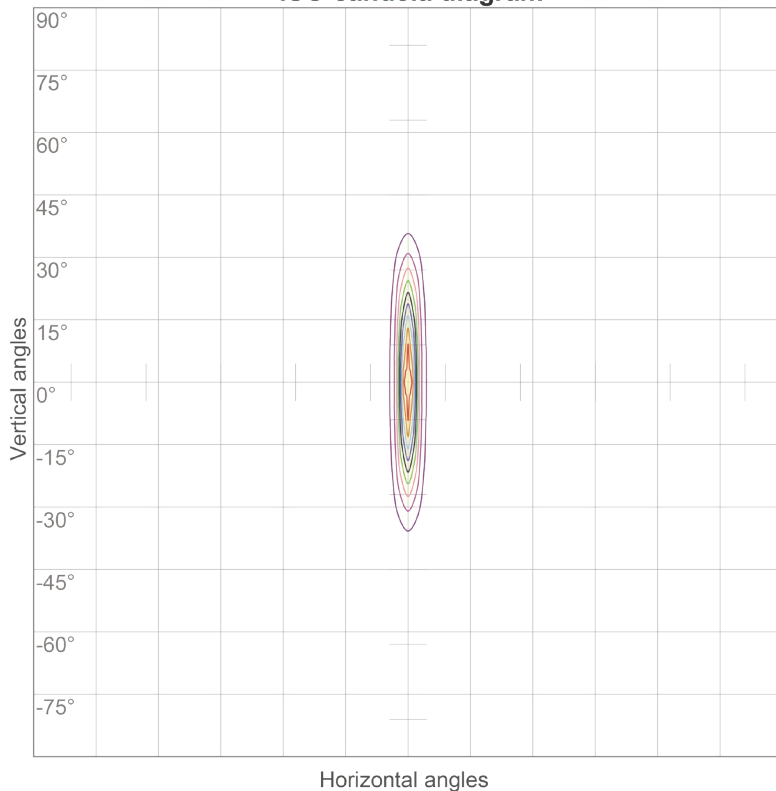
Number of c-planes: 72

Lux at center: 2082 lx

*Lux distribution on a surface
when lamp is mounted at 10
meters from the surface.*



ISO candela diagram



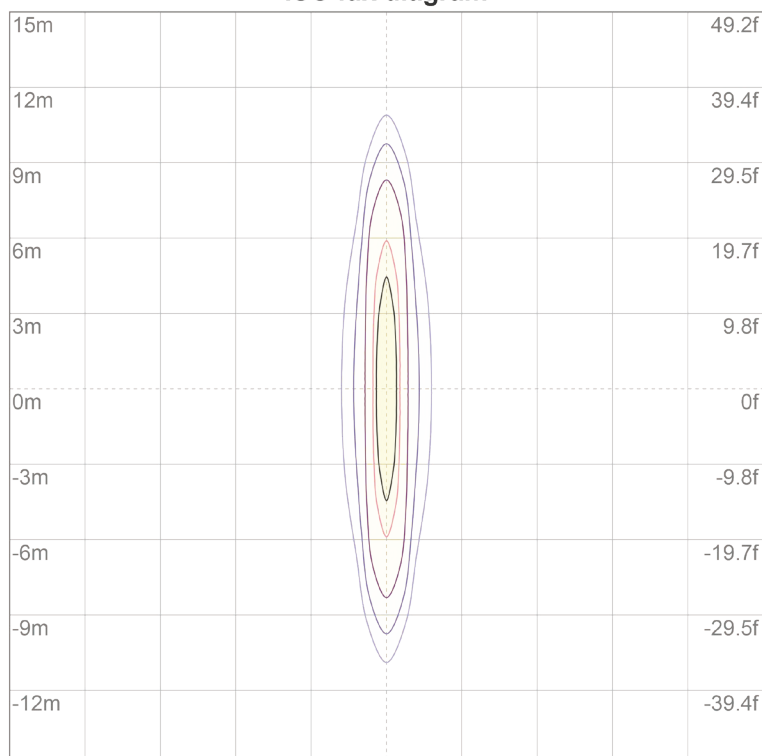
10%	1319 cd
20%	2637 cd
30%	3956 cd
40%	5275 cd
50%	6593 cd
60%	7912 cd
70%	9231 cd
80%	10549 cd
90%	11868 cd

Conditions:

Number of c-planes: 72

Candela at center: 13187 cd

ISO lux diagram



3%	3.96 lx
5%	6.59 lx
10%	13.2 lx
30%	39.6 lx
50%	65.9 lx

Conditions:

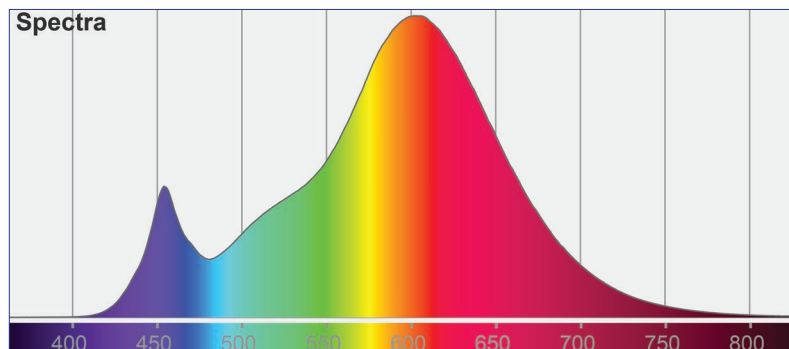
Number of c-planes: 72

Lux at center: 132 lx

*Lux distribution on a surface
when lamp is mounted at 10
meters from the surface.*

LuxEOS BEAM 20 - TW (1700-5700K)

Colormetrics **1700K, 2700K, 5700K** (All channels on)



Total Lumen Output (Native) : 2106 lm

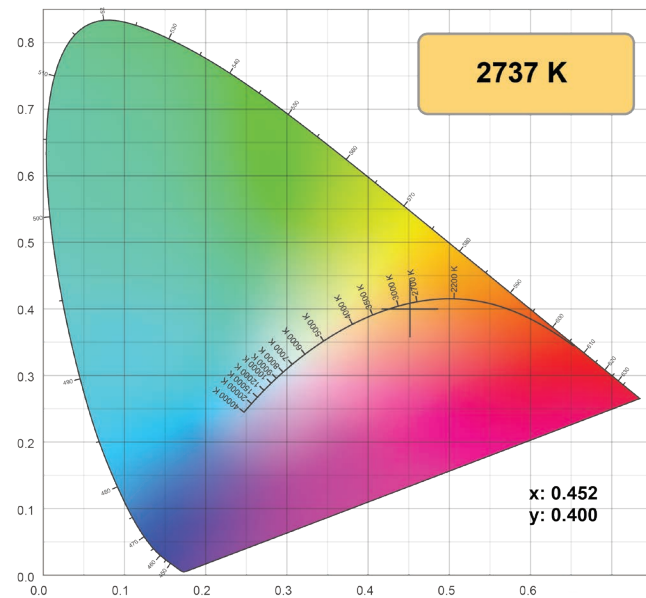
Efficacy : 47 lm/W

Voltage : 240V

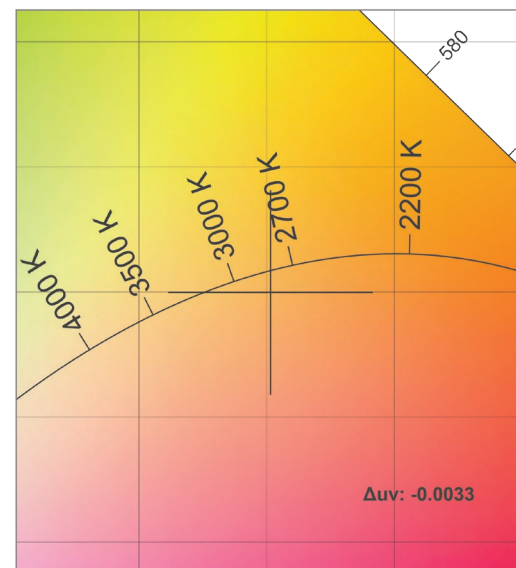
Supply Power : 45W

Supply Power Factor : 0.97

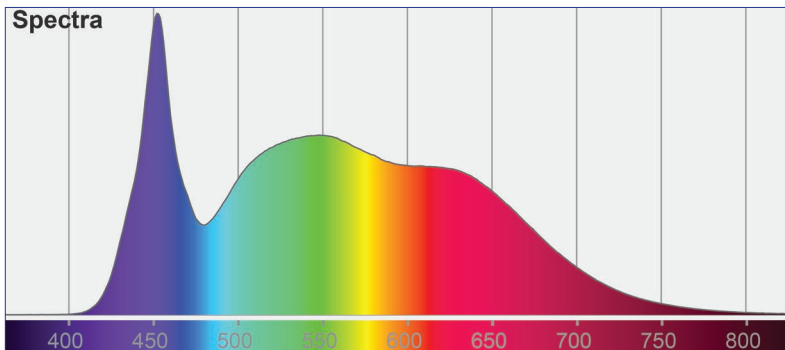
CIE 1931



CIE 1931 Zoom

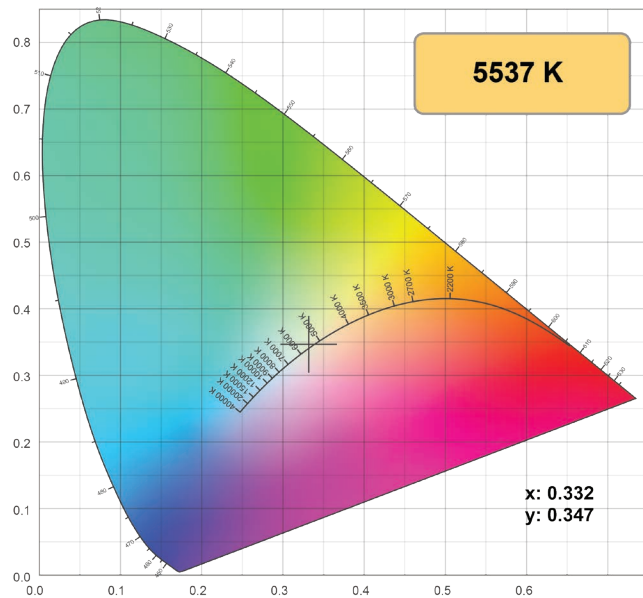


LuxEOS BEAM 20 - TW (1700-5700K) Colormetrics **5700K**

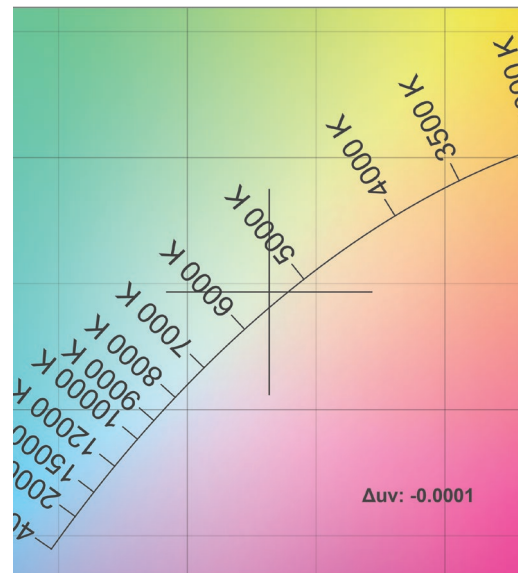


White 5700K Lumen Output : 692 lm
CRI: 90

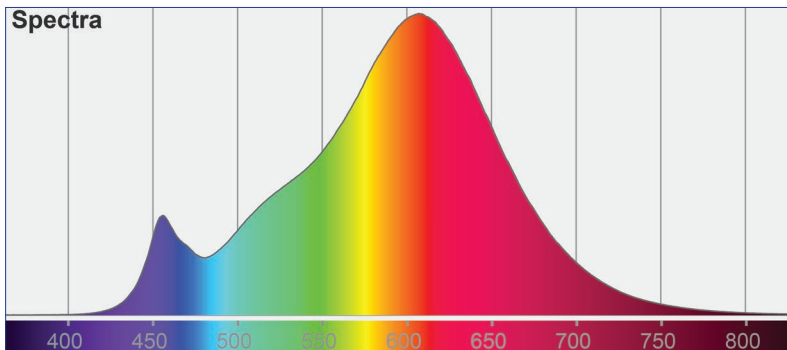
CIE 1931



CIE 1931 Zoom

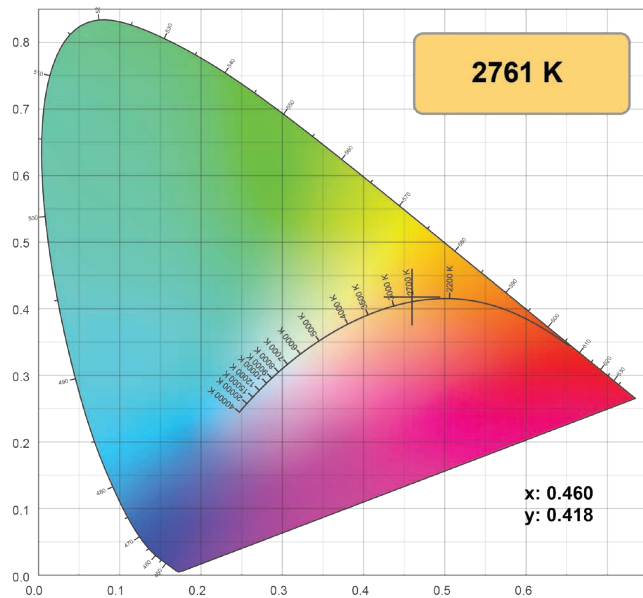


LuxEOS BEAM 20 - TW (1700-5700K) Colormetrics **2700K**

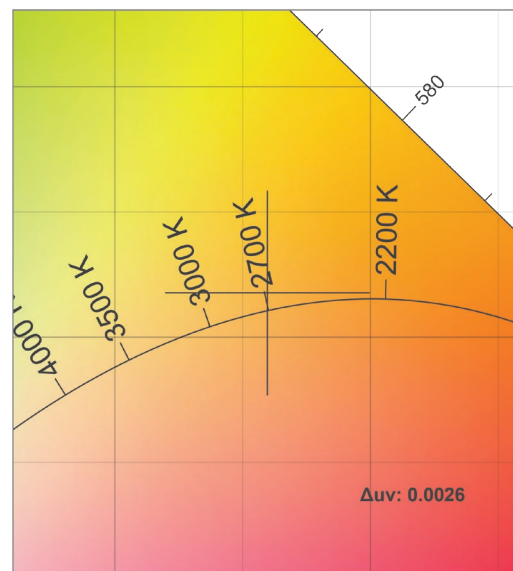


White 2700K Lumen Output : 794 lm
CRI: 90

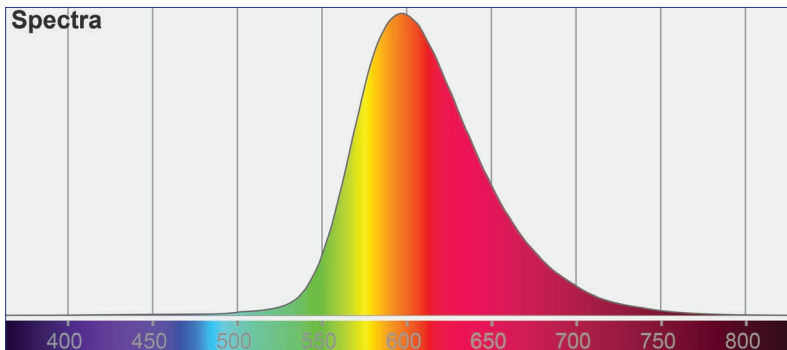
CIE 1931



CIE 1931 Zoom

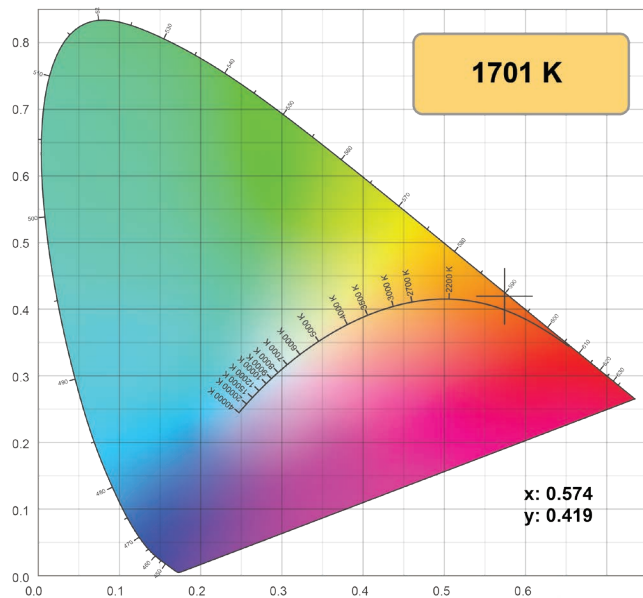


LuxEOS BEAM 20 - TW (1700-5700K) Colormetrics **1700K**

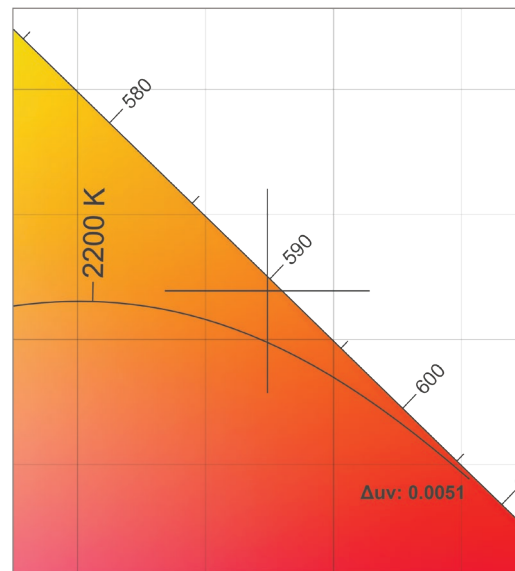


Amber 1700K Lumen Output : 609 lm

CIE 1931



CIE 1931 Zoom



Should further photometric variations be required, please contact our Head Office.

As part our commitment to continuous improvement PULSAR may change the specifications of its products without prior notification or public announcement.
All descriptions, illustrations, drawings and specifications in this publication present only general particulars and shall not form part of any contract.

PULSAR

1 Pembroke Avenue, Waterbeach, Cambridge, CB25 9QP
www.pulsarlight.com | sales@pulsarlight.com | +44 (0) 1223 403 500